



Medallion Fence

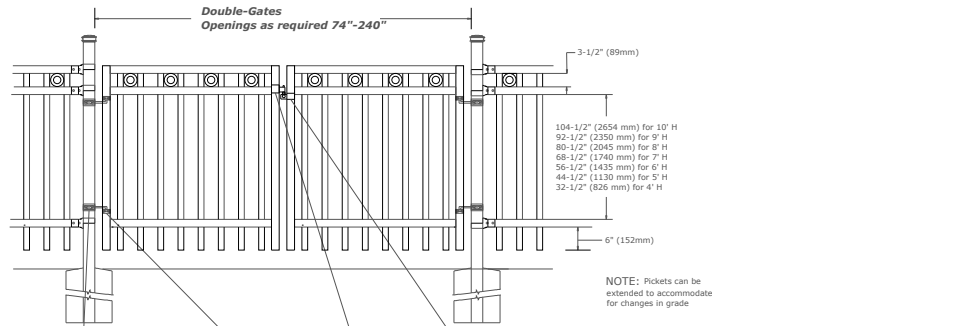
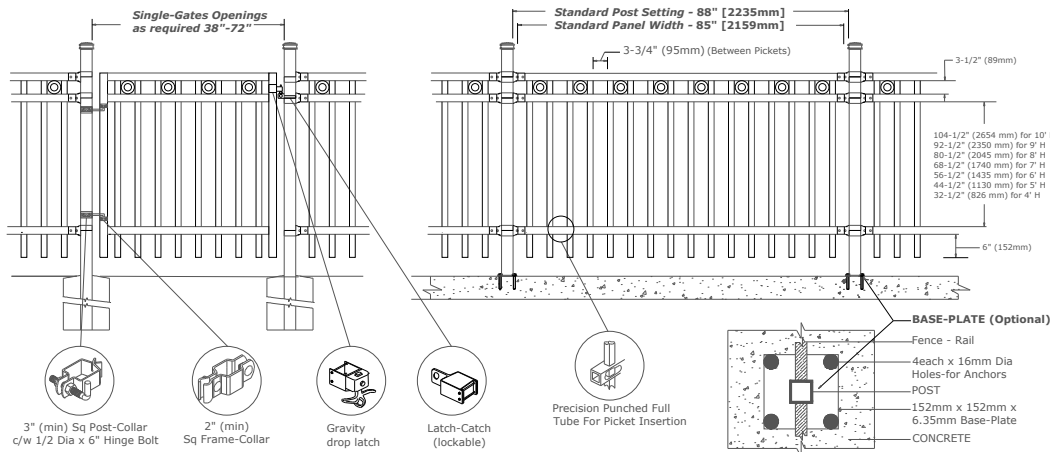
10651 KEELE STREET
 MAPLE, ONTARIO L6A 3Y9
 (T) 905-832-2922 || 1-800-794-1564 || (F) 905-832-1564
 info@medallionfence.com || www.medallionfence.com

Style:

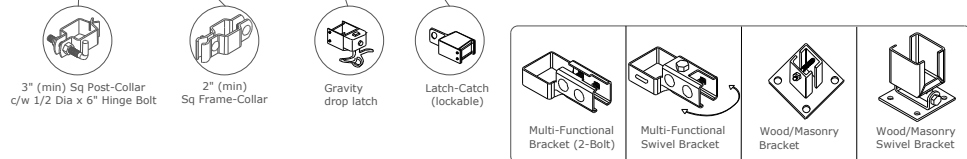
STANTON-REO-AL/RP

Series:

HAWKSTONE™



NOTE: Pickets can be extended to accommodate for changes in grade



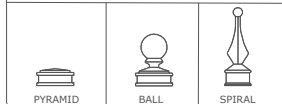
MATERIAL SPECIFICATIONS:

Alu-Tuff™
 BY MEDALLION FENCE



Protected By

OPTIONAL POST CAPS



SPECIFICATIONS

TUBE COMPOSITION - POSTS, RAILS & PICKETS

Marine Grade Aluminum
 ○ 6061-T6

MATERIAL DIMENSIONS

PICKET	1 1/2" x 3/4" [38mm x 19mm] .080 Wall
RAILS	2" x 2" [50mmx50mm] .125 Wall
POSTS	3" x 3" [76mm x 76mm] .188 Wall
OPTIONAL POST(1) REGULAR or BASE-PLATED	Larger profiles available - contact Medallion Fence

WELDS	Aluminum Mig Weld
-------	-------------------

FITTINGS	12 Gauge Stamp Forged Finish as below
FITTING FASTENERS	JS1000 Plated Finish as below
OPTIONAL FASTENER	Tamper Proof Nuts

FINISH

GRADE	Super Durable Polyester Powder Coat
OPTIONAL PRIMER	Zinc Rich Epoxy Powder Coat
OPTIONAL PRIMER (2)	E-Coat
STANDARD COLOUR	SEMI-GLOSS - BLACK
OTHER COLOURS	Green, Brown, White, Antique Silver
CUSTOM COLOURS	Per Specifications

STANDARD HEIGHTS	4'	5'	6'	7'	8'	9'	10'
	1219mm	1524mm	1892mm	2134mm	2438mm	2743mm	3048mm
Custom heights are available (upon request)							

STANDARD GATES	Passage, Double Entry, Cantilever
----------------	-----------------------------------

STANDARD POST SETTING & PANEL WIDTH

FOR FENCE HEIGHTS	PANEL WIDTH	POST SPACING [OPENING]
Up to 6' [1829mm]	85" [2159mm]	88" [2235mm]
Over 6' [1829mm]	85" [2159mm] or as required	