



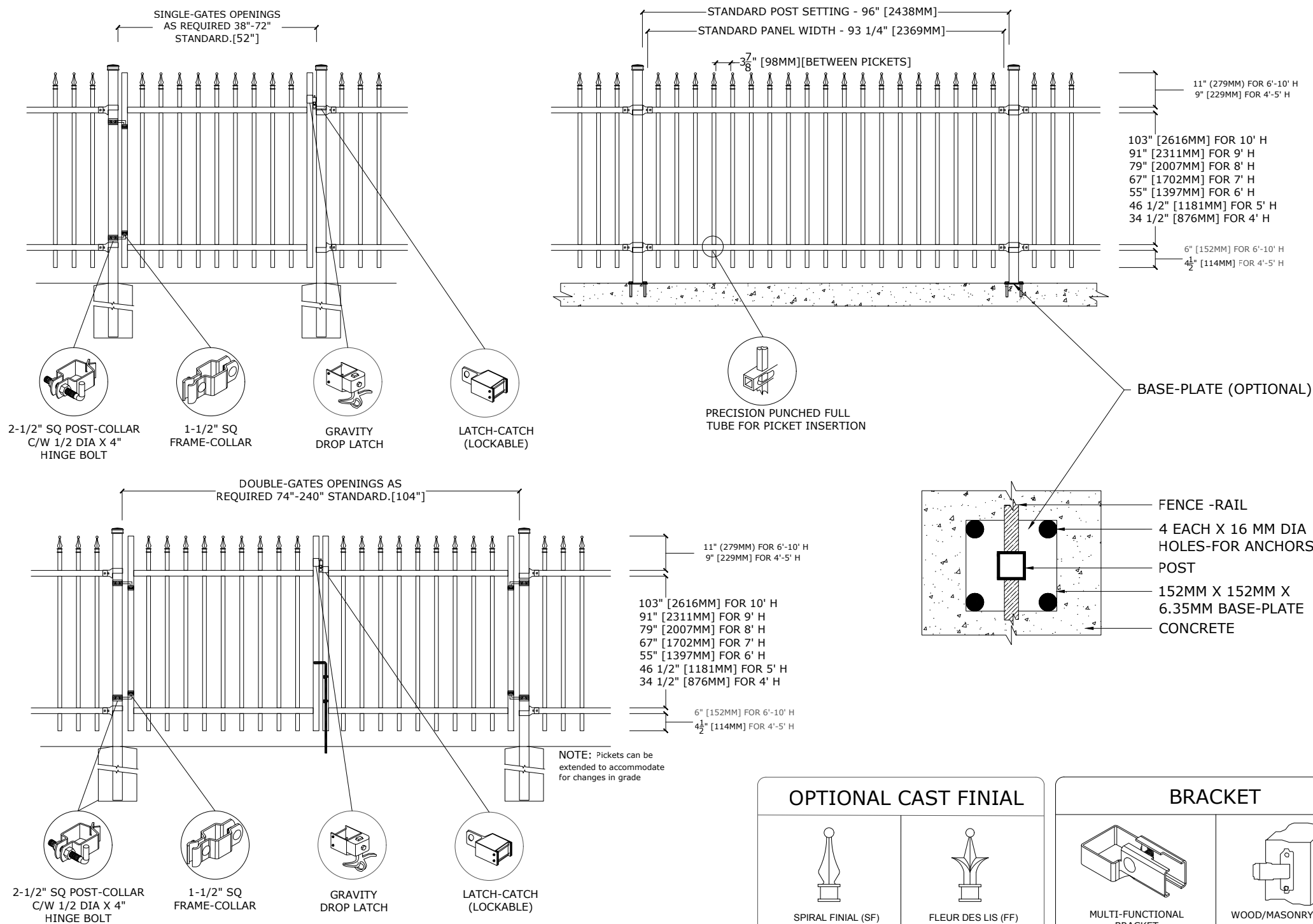
# Medallion Fence

10651 KEELE STREET  
 MAPLE, ONTARIO L6A 3Y9  
 (T) 905-832-2922 || 1-800-794-1564 || (F) 905-832-1564  
 info@medallionfence.com || www.medallionfence.com

Medallion Fence

**STYLE:**  
**CAVALIER-SF-AL**

**SERIES:**  
**OXFORD™**



## MATERIAL SPECIFICATIONS:

ALU-TUFF™  
 BY MEDALLION FENCE

PROTECTED BY



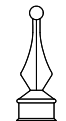
## OPTIONAL POST CAPS



PYRAMID

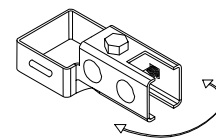


BALL

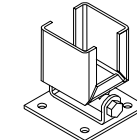


SPIRAL

## SWIVEL BRACKET

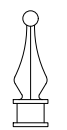


MULTI-FUNCTIONAL SWIVEL BRACKET



WOOD/MASONRY SWIVEL BRACKET

## OPTIONAL CAST FINIAL

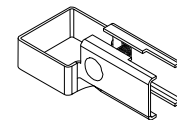


SPIRAL FINIAL (SF)

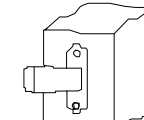


FLEUR DES LIS (FF)

## BRACKET



MULTI-FUNCTIONAL BRACKET



WOOD/MASONRY BRACKET

## SPECIFICATIONS

### TUBE COMPOSITION - POSTS , RAILS & PICKETS

- HIGH-STRENGTH EXTRUDED ALUMINUM ALLOY (6061-T4 & 6061-T6 TEMPERS)
- ULTIMATE TENSILE STRENGTH: ≈ 290 MPA (T4), ≈ 339 MPA (T6)
- YIELD STRENGTH: ≈ 210 MPA (T4), ≈ 317 MPA (T6)
- ELONGATION: ≈ 8%-16% (T6), UP TO ~16%+ (T4) DEPENDING ON THICKNESS

## MATERIAL DIMENSIONS

PICKET	1" x 1" (25mm x 25mm) .065 Wall
RAILS	1-1/2" x 1-1/2" (38mm x 38mm) .080 Wall
POSTS REGULAR or BASE-PLATED	2-1/2" x 2-1/2" (64mm x 64mm) .125 Wall
OPTIONAL POST REGULAR or BASE-PLATED	3" x 3" (76mm x 76mm) .188 Wall requires cast aluminum mounting bracket
UPRIGHTS	1-1/2" x 1-1/2" (38mm x 38mm) .125 Wall

<b>WELDS</b>	Aluminum Mig Weld
<b>FITTINGS</b>	12 Gauge Stamp Forged Finish as below
FITTING FASTENERS	JS1000 Plated Finish as below
OPTIONAL FASTENER	Tamper Proof Nuts

## FINISH

<b>GRADE</b>	Super Durable Polyester Powder Coat
OPTIONAL PRIMER	Zinc Rich Epoxy Powder Coat
OPTIONAL PRIMER (2)	E-Coat
STANDARD COLOUR	SEMI-GLOSS - BLACK
OTHER COLOURS	Green, Brown, White, Antique Silver
CUSTOM COLOURS	Per Specifications

<b>STANDARD HEIGHTS</b>	4'-3" [1295MM]	5'-3" [1600MM]	6'-3" [1905MM]	7'-3" [2210MM]	8'-3" [2514MM]	9'-3" [2819MM]	10'-3" [3124MM]
	Custom heights are available (upon request)						

STANDARD GATES	Passage, Double Entry, Cantilever
----------------	-----------------------------------

## STANDARD POST SETTING & PANEL WIDTH

FOR FENCE HEIGHTS	PANEL WIDTH	POST SPACING [OPENING]
Up to 6' [1829mm]	93 1/4" [2369MM]	96" [2438 MM]
Over 6' [1829mm]	93 1/4" [2369MM]	96" [2438 MM]