

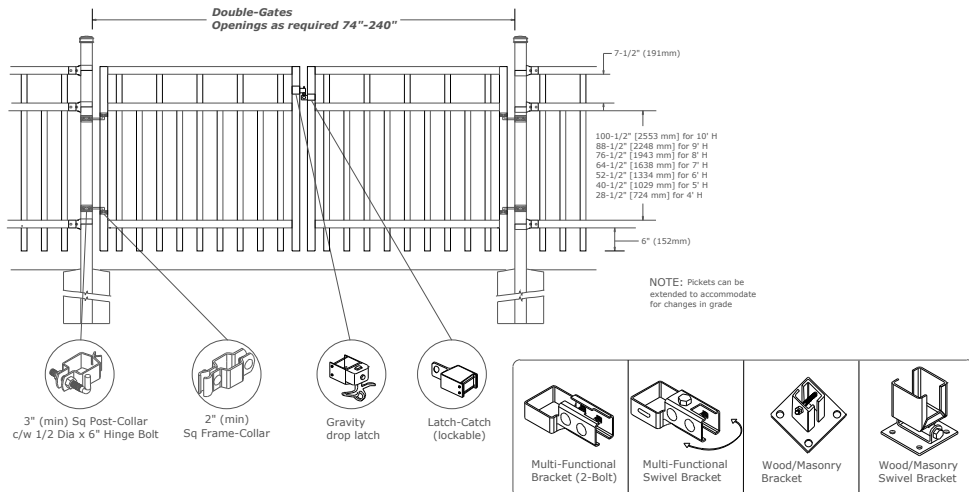
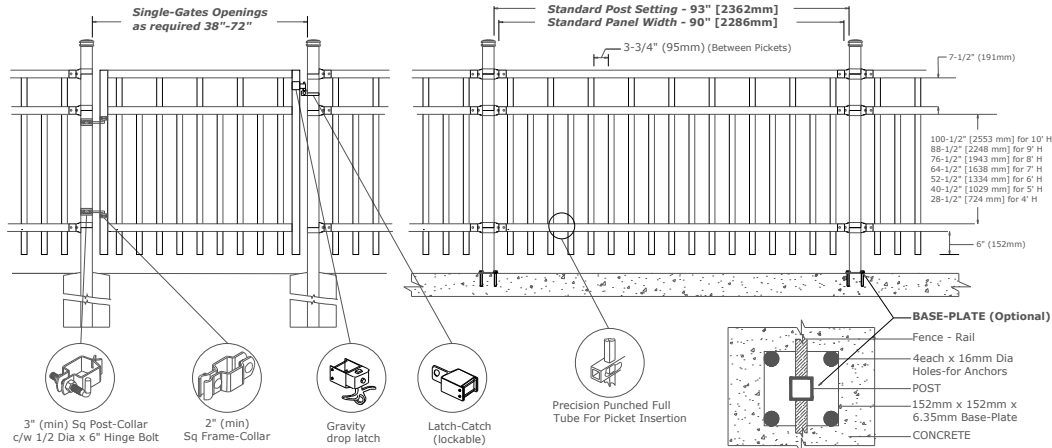


## Medallion Fence

10651 KEELE STREET  
 MAPLE, ONTARIO L6A 3Y9  
 (T) 905-832-2922 | 1-800-794-1564 | (F) 905-832-1564  
 info@medallionfence.com | www.medallionfence.com

**Style:**  
 ALDEN-AL/RP

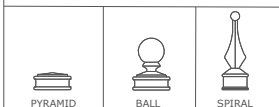
**Series:**  
 HAWKSTONE™



**MATERIAL SPECIFICATIONS:**  
 Alu-Tuff™  
 BY MEDALLION FENCE



### OPTIONAL POST CAPS



## SPECIFICATIONS

### TUBE COMPOSITION - POSTS, RAILS & PICKETS

Marine Grade Aluminum  
 o 6061-T6

## MATERIAL DIMENSIONS

PICKET	1 1/2" x 3/4" [38mm x 19mm] .080 Wall
RAILS	2" x 2" [50mmx50mm] .125 Wall
POSTS	3" x 3" [76mm x 76mm] .188 Wall
OPTIONAL POST(1) REGULAR or BASE-PLATED	Larger profiles available – contact Medallion Fence
WELDS	Aluminum Mig Weld
FITTINGS	12 Gauge Stamp Forged Finish as below
FITTING FASTENERS	JS1000 Plated Finish as below
OPTIONAL FASTENER	Tamper Proof Nuts

## FINISH

GRADE	Super Durable Polyester Powder Coat
OPTIONAL PRIMER	Zinc Rich Epoxy Powder Coat
OPTIONAL PRIMER (2)	E-Coat
STANDARD COLOUR	SEMI-GLOSS - BLACK
OTHER COLOURS	Green, Brown, White, Antique Silver
CUSTOM COLOURS	Per Specifications

STANDARD HEIGHTS	4'	5'	6'	7'	8'	9'	10'
	1219mm	1524mm	1892mm	2134mm	2438mm	2743mm	3048mm
Custom heights are available (upon request)							

STANDARD GATES: Passage, Double Entry, Cantilever

### STANDARD POST SETTING & PANEL WIDTH

FOR FENCE HEIGHTS	PANEL WIDTH	POST SPACING [OPENING]
Up to 6' [1829mm]	90" [2286mm]	93" [2362 mm]
Over 6' [1829mm]	90" [2286mm] or as required	