



Medallion Fence

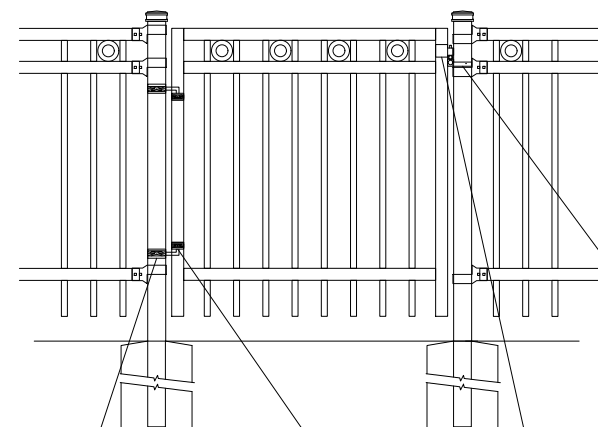
10651 KEELE STREET
 MAPLE, ONTARIO L6A 3Y9
 (T) 905-832-2922 || 1-800-794-1564 || (F) 905-832-1564
 info@medallionfence.com || www.medallionfence.com

Medallion Fence

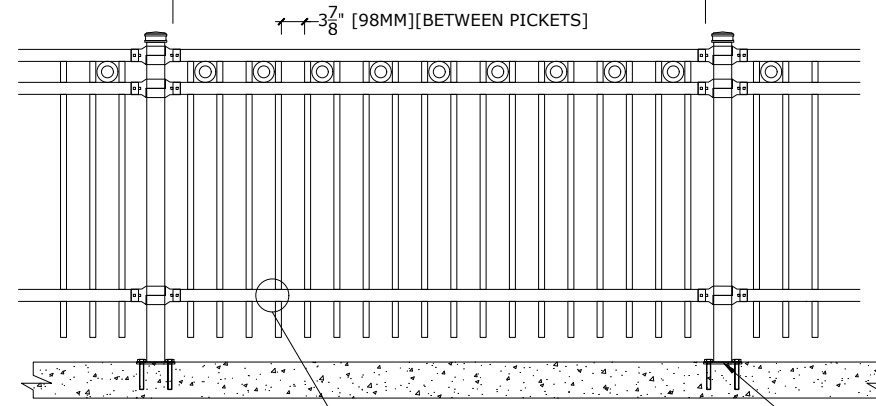
STYLE:
STANTON-REO-AL

SERIES:
HAWKSTON™

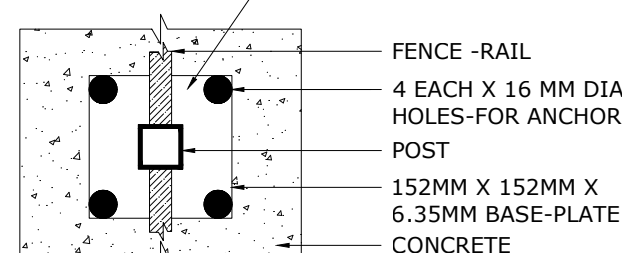
SINGLE-GATES OPENINGS
 AS REQUIRED 38"-72"
 STANDARD.[48"]



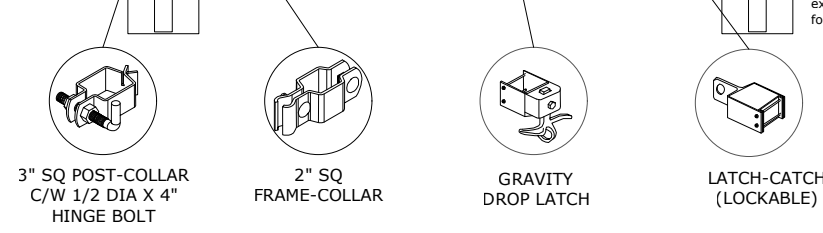
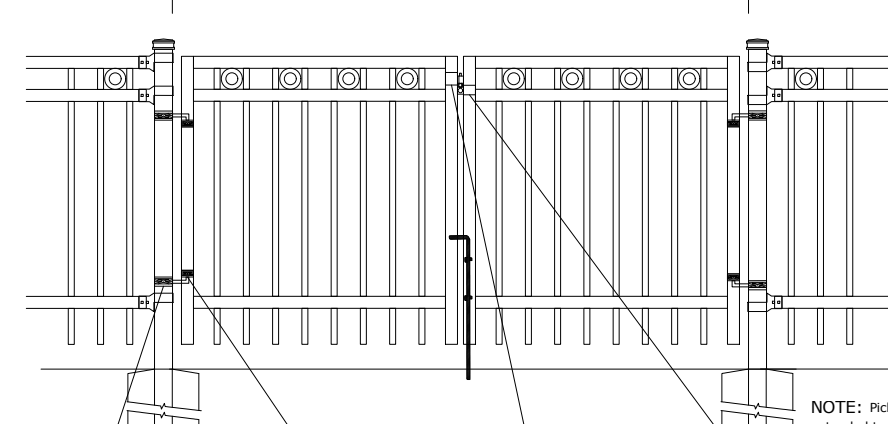
STANDARD POST SETTING - 91 1/2" [2324MM]
 STANDARD PANEL WIDTH - 88 3/4" [2255MM]



- 3 1/2" [89MM]
- 104-1/2" [2654 MM] FOR 10' H
- 92-1/2" [2350 MM] FOR 9' H
- 80-1/2" [2045 MM] FOR 8' H
- 68-1/2" [1740 MM] FOR 7' H
- 56-1/2" [1435 MM] FOR 6' H
- 44-1/2" [1130 MM] FOR 5' H
- 32 1/2" [826MM] FOR 4' H
- 6" [152MM]



DOUBLE-GATES OPENINGS AS
 REQUIRED 74"-240" STANDARD.[96"]



- 3 1/2" [89MM]
- 104-1/2" [2654 MM] FOR 10' H
- 92-1/2" [2350 MM] FOR 9' H
- 80-1/2" [2045 MM] FOR 8' H
- 68-1/2" [1740 MM] FOR 7' H
- 56-1/2" [1435 MM] FOR 6' H
- 44-1/2" [1130 MM] FOR 5' H
- 32 1/2" [826MM] FOR 4' H
- 6" [152MM]

NOTE: Pickets can be extended to accommodate for changes in grade

MATERIAL SPECIFICATIONS:

ALU-TUFF™
 BY MEDALLION FENCE

PROTECTED BY



OPTIONAL POST CAPS



PYRAMID

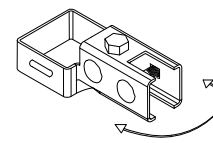


BALL

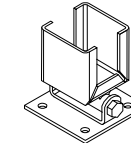


SPIRAL

SWIVEL BRACKET

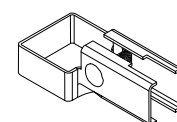


MULTI-FUNCTIONAL SWIVEL BRACKET

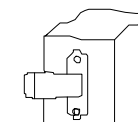


WOOD/MASONRY SWIVEL BRACKET

BRACKET



MULTI-FUNCTIONAL BRACKET



WOOD/MASONRY BRACKET

SPECIFICATIONS

TUBE COMPOSITION - POSTS , RAILS & PICKETS

- HIGH-STRENGTH EXTRUDED ALUMINUM ALLOY (6061-T4 & 6061-T6 TEMPERS)
- ULTIMATE TENSILE STRENGTH: ≈ 290 MPA (T4), ≈ 339 MPA (T6)
- YIELD STRENGTH: ≈ 210 MPA (T4), ≈ 317 MPA (T6)
- ELONGATION: ≈ 8%-16% (T6), UP TO ~16%+ (T4) DEPENDING ON THICKNESS

MATERIAL DIMENSIONS

PICKET	1" x 1" (25mm x 25mm) .080 Wall
RAILS	2" x 2" [50mmx50mm] .125 Wall
POSTS REGULAR or BASE-PLATED	3" x 3" [76mm x 76mm] .188 Wall
OPTIONAL POST REGULAR or BASE-PLATED	Larger profiles available - contact Medallion Fence
UPRIGHTS	2" x 2" [50mmx50mm] .188 Wall

WELDS	Aluminum Mig Weld
FITTINGS	12 Gauge Stamp Forged Finish as below
FITTING FASTENERS	JS1000 Plated Finish as below
OPTIONAL FASTENER	Tamper Proof Nuts

FINISH

GRADE	Super Durable Polyester Powder Coat
OPTIONAL PRIMER	Zinc Rich Epoxy Powder Coat
OPTIONAL PRIMER (2)	E-Coat
STANDARD COLOUR	SEMI-GLOSS - BLACK
OTHER COLOURS	Green, Brown, White, Antique Silver
CUSTOM COLOURS	Per Specifications

STANDARD HEIGHTS	4' 1219MM	5' 1524MM	6' 1829MM	7' 2134MM	8' 2438MM	9' 2743MM	10' 3048MM
	Custom heights are available (upon request)						

STANDARD GATES	Passage, Double Entry, Cantilever
----------------	-----------------------------------

STANDARD POST SETTING & PANEL WIDTH

FOR FENCE HEIGHTS	PANEL WIDTH	POST SPACING [OPENING]
Up to 6' [1829mm]	88 3/4" [2255MM]	91 1/2" [2324MM]
Over 6' [1829mm]	88 3/4" [2255MM]	91 1/2" [2324MM]