



Medallion Fence

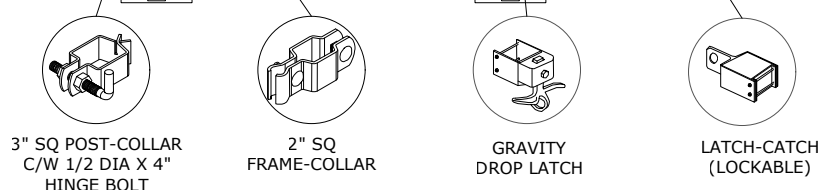
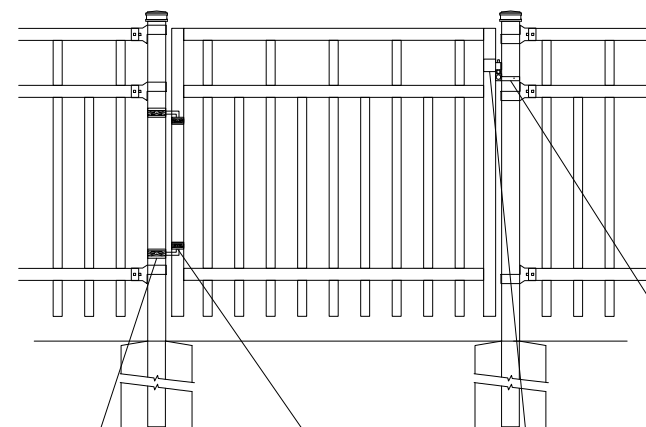
10651 KEELE STREET
 MAPLE, ONTARIO L6A 3Y9
 (T) 905-832-2922 || 1-800-794-1564 || (F) 905-832-1564
 info@medallionfence.com || www.medallionfence.com

Medallion Fence

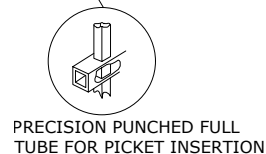
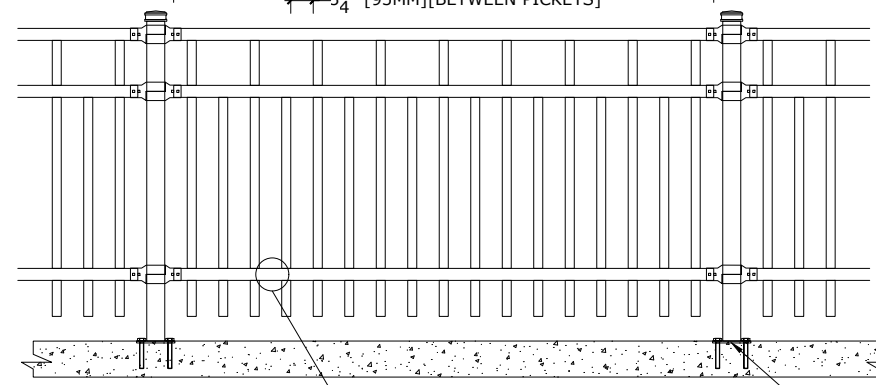
STYLE:
ALDEN

SERIES:
HAWKSTONE RP™

SINGLE-GATES OPENINGS
 AS REQUIRED 38"-72"
 STANDARD.[56"]

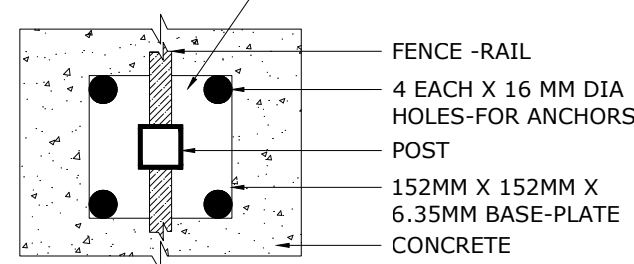


STANDARD POST SETTING - 93" [2362MM]
 STANDARD PANEL WIDTH - 90" [2286MM]
 3/4" [95MM][BETWEEN PICKETS]

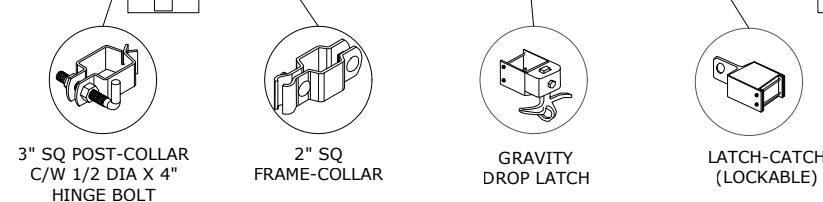
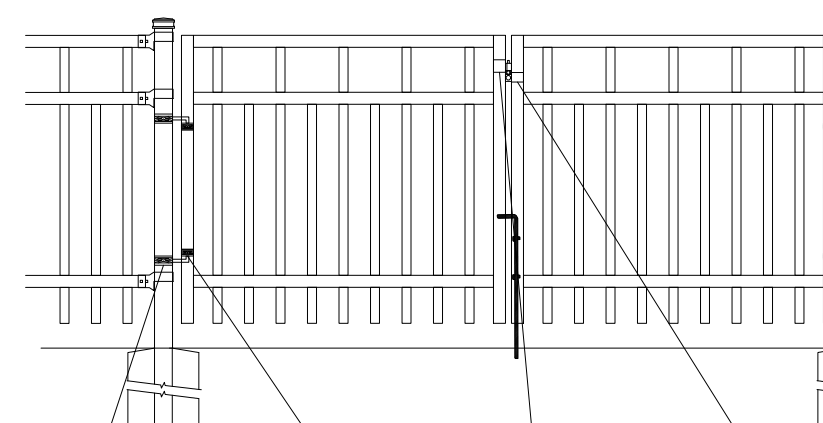


7 1/2" [191MM]
 100-1/2" [2553 MM] FOR 10' H
 88-1/2" [2248 MM] FOR 9' H
 76-1/2" [1943 MM] FOR 8' H
 64-1/2" [1638 MM] FOR 7' H
 52-1/2" [1334 MM] FOR 6' H
 40-1/2" [1029 MM] FOR 5' H
 28 1/2" [724MM] FOR 4' H
 6" [152MM]

BASE-PLATE (OPTIONAL)



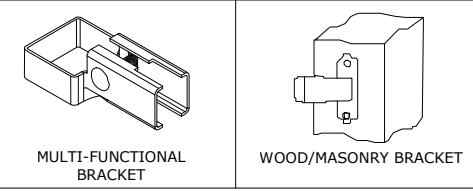
DOUBLE-GATES OPENINGS AS
 REQUIRED 74"-240" STANDARD.[112"]



NOTE: Pickets can be extended to accommodate for changes in grade

7 1/2" [191MM]
 100-1/2" [2553 MM] FOR 10' H
 88-1/2" [2248 MM] FOR 9' H
 76-1/2" [1943 MM] FOR 8' H
 64-1/2" [1638 MM] FOR 7' H
 52-1/2" [1334 MM] FOR 6' H
 40-1/2" [1029 MM] FOR 5' H
 28 1/2" [724MM] FOR 4' H
 6" [152MM]

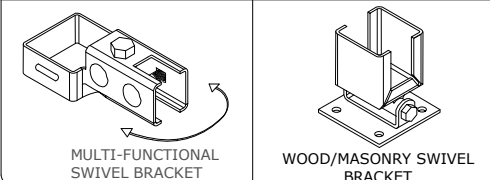
BRACKET



MULTI-FUNCTIONAL BRACKET

WOOD/MASONRY BRACKET

SWIVEL BRACKET



MULTI-FUNCTIONAL SWIVEL BRACKET

WOOD/MASONRY SWIVEL BRACKET

MATERIAL SPECIFICATIONS:

ARMOUR-SHIELD™
 BY MEDALLION FENCE

PROTECTED BY



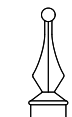
OPTIONAL POST CAPS



PYRAMID



BALL



SPIRAL

SPECIFICATIONS

TUBE COMPOSITION - POSTS , RAILS & PICKETS

- MINIMUM WELD STRENGTH: 45 KSI (310 MPA)
- MINIMUM TENSILE STRENGTH: 55 KSI (380 MPA)
- ASTM A787 (TUBE)
- TUBE MANUFACTURED FROM PRE-COATED ALUMINUM-ZINC COATED STEEL WITH COATING DESIGNATION AZ50 CONFORMING TO ASTM A792/A792M

MATERIAL DIMENSIONS

PICKET	1-1/2" x 3/4" (38mm x 19mm) 16GA
RAILS	2" x 2" (51mm x 51mm) 14 GA
POSTS REGULAR or BASE-PLATED	3" x 3" [76mm x 76mm] 14 GA
OPTIONAL POST REGULAR or BASE-PLATED	3" x 3" (76mmx76mm) 11 GA 4" x 4" (102mmx102mm) 11GA
UPRIGHTS	2" x 2" [51mm x 51mm] 14GA

WELDS	Stainless Steel Mig Weld
FITTINGS	12 Gauge Stamp Forged Finish as below
FITTING FASTENERS	JS1000 Plated Finish as below
OPTIONAL FASTENER	Tamper Proof Nuts

FINISH

GRADE	Super Durable Polyester Powder Coat
OPTIONAL PRIMER	Zinc Rich Epoxy Powder Coat
OPTIONAL PRIMER (2)	E-Coat
STANDARD COLOUR	SEMI-GLOSS - BLACK
OTHER COLOURS	Green, Brown, White, Antique Silver
CUSTOM COLOURS	Per Specifications

STANDARD HEIGHTS	4'	5'	6'	7'	8'	9'	10'
	1219MM	1524MM	1892MM	2134MM	2438MM	2743MM	3048MM
Custom heights are available (upon request)							

STANDARD GATES	Passage, Double Entry, Cantilever
----------------	-----------------------------------

STANDARD POST SETTING & PANEL WIDTH

FOR FENCE HEIGHTS	PANEL WIDTH	POST SPACING [OPENING]
Up to 6' [1829mm]	90" [2286MM]	93" [2362MM]
Over 6' [1829mm]	90" [2286MM]	93" [2362MM]