



# Medallion Fence

10651 KEELE STREET  
 MAPLE, ONTARIO L6A 3Y9  
 (T) 905-832-2922 || 1-800-794-1564 || (F) 905-832-1564  
 info@medallionfence.com || www.medallionfence.com

Medallion Fence

**STYLE:**  
**GUARDIAN**

**SERIES:**  
**HAWKSTONE™**

## SPECIFICATIONS

### TUBE COMPOSITION - POSTS , RAILS & PICKETS

- MINIMUM WELD STRENGTH: 45 KSI (310 MPA)
- MINIMUM TENSILE STRENGTH: 55 KSI (380 MPA)
- ASTM A787 (TUBE)
- TUBE MANUFACTURED FROM PRE-COATED ALUMINUM-ZINC COATED STEEL WITH COATING DESIGNATION AZ50 CONFORMING TO ASTM A792/A792M

## MATERIAL DIMENSIONS

PICKET	1"X1" (25mm x 25mm) 18 GA
RAILS	2" x 2" [50mm x 50mm] 14GA
POSTS REGULAR or BASE-PLATED	3" x 3" [76mm x 76mm] 14 GA
OPTIONAL POST REGULAR or BASE-PLATED	Larger profiles available - contact Medallion Fence
UPRIGHTS	2" x 2" [50mm x 50mm] 14GA

<b>WELDS</b>	Stainless Steel Mig Weld
<b>FITTINGS</b>	12 Gauge Stamp Forged Finish as below
FITTING FASTENERS	JS1000 Plated Finish as below
OPTIONAL FASTENER	Tamper Proof Nuts

## FINISH

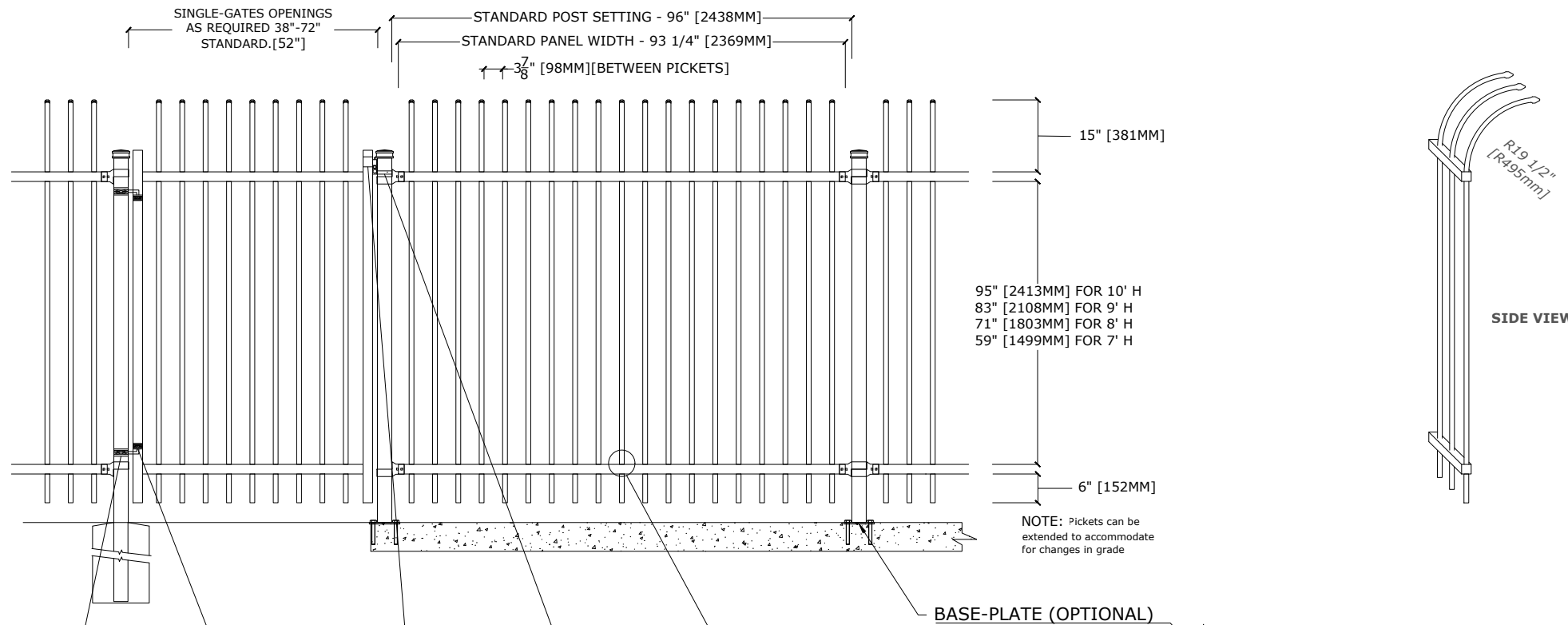
<b>GRADE</b>	Super Durable Polyester Powder Coat
OPTIONAL PRIMER	Zinc Rich Epoxy Powder Coat
OPTIONAL PRIMER (2)	E-Coat
STANDARD COLOUR	SEMI-GLOSS - BLACK
OTHER COLOURS	Green, Brown, White, Antique Silver
CUSTOM COLOURS	Per Specifications

<b>STANDARD HEIGHTS</b>	7' 2134MM	8' 2438MM	9' 2743MM	10' 3048MM
	Custom heights are available (upon request)			

STANDARD GATES	Passage, Double Entry, Cantilever
----------------	-----------------------------------

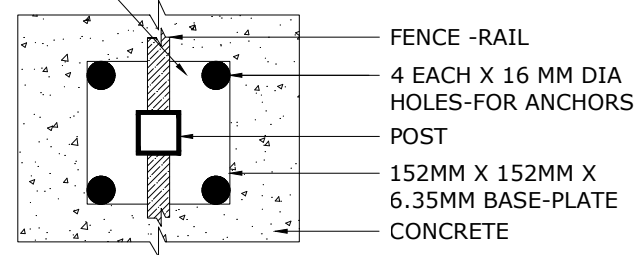
## STANDARD POST SETTING & PANEL WIDTH

FOR FENCE HEIGHTS	PANEL WIDTH	POST SPACING [OPENING]
Up to 6' [1829mm]	NA	
Over 6' [1829mm]	93 1/4" [2369MM]	96" [2438MM]



NOTE: Pickets can be extended to accommodate for changes in grade

BASE-PLATE (OPTIONAL)



3" SQ POST-COLLAR  
C/W 1/2 DIA X 4"  
HINGE BOLT

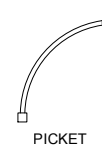
2" SQ  
FRAME-COLLAR

GRAVITY  
DROP LATCH

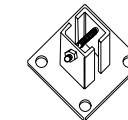
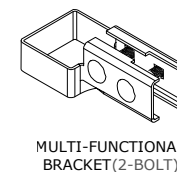
LATCH-CATCH  
(LOCKABLE)

PRECISION PUNCHED FULL  
TUBE FOR PICKET INSERTION

### PICKET DETAIL



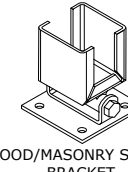
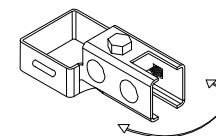
### BRACKET



### OPTIONAL POST CAPS



### SWIVEL BRACKET



## MATERIAL SPECIFICATIONS:

ARMOUR-SHIELD™  
 BY MEDALLION FENCE

PROTECTED BY



ARMOUR-SHIELD™