



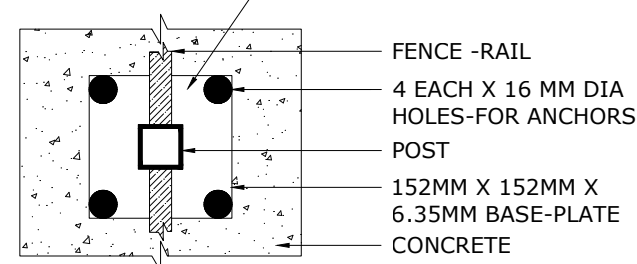
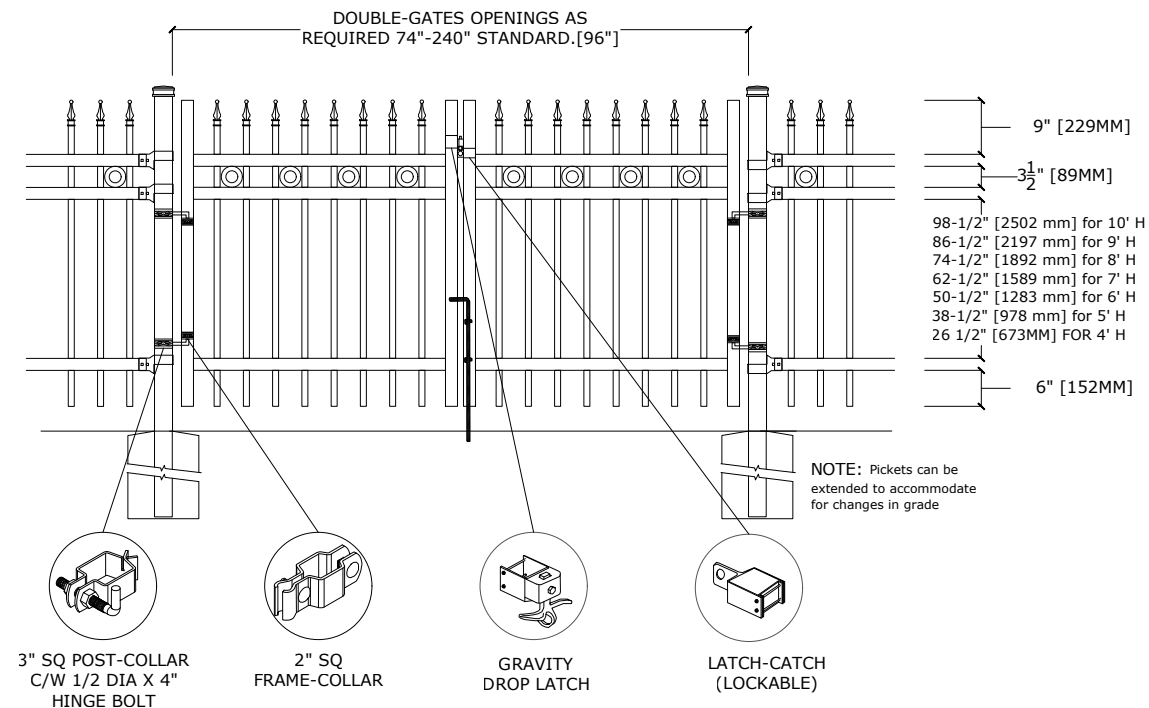
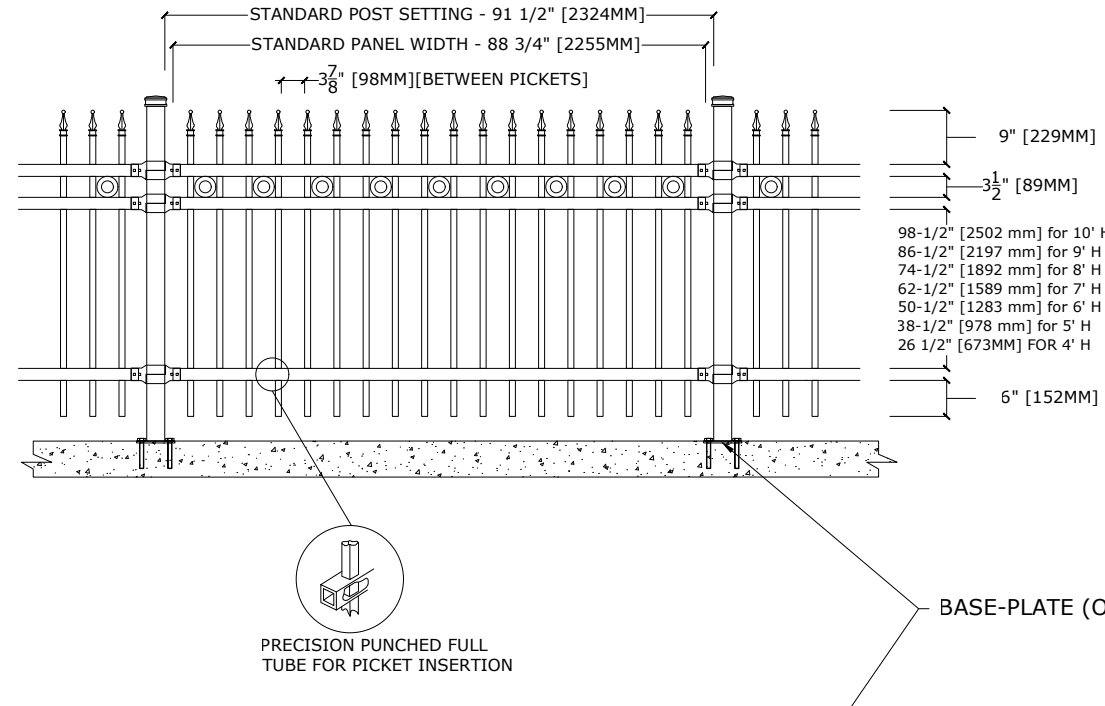
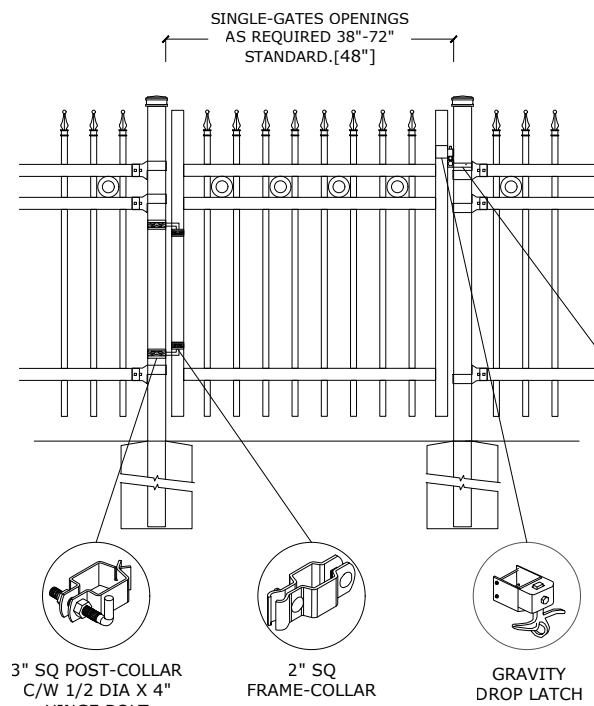
# Medallion Fence

10651 KEELE STREET  
 MAPLE, ONTARIO L6A 3Y9  
 (T) 905-832-2922 || 1-800-794-1564 || (F) 905-832-1564  
 info@medallionfence.com || www.medallionfence.com

Medallion Fence

**STYLE:**  
**CAVALIER-DR-SF-REO**

**SERIES:**  
**HAWKSTONE™**



**OPTIONAL CAST FINIAL**

SPIRAL FINIAL (SF)

FLEUR DES LIS (FF)

**BRACKET**

MULTI-FUNCTIONAL  
BRACKET

WOOD/MASONRY BRACKET

**OPTIONAL POST CAPS**

PYRAMID

BALL

SPIRAL

**SWIVEL BRACKET**

MULTI-FUNCTIONAL  
SWIVEL BRACKET

WOOD/MASONRY SWIVEL  
BRACKET

**MATERIAL SPECIFICATIONS:**  
 ARMOUR-SHIELD™  
 BY MEDALLION FENCE



## SPECIFICATIONS

### TUBE COMPOSITION - POSTS , RAILS & PICKETS

- MINIMUM WELD STRENGTH: 45 KSI (310 MPA)
- MINIMUM TENSILE STRENGTH: 55 KSI (380 MPA)
- ASTM A787 (TUBE)
- TUBE MANUFACTURED FROM PRE-COATED ALUMINUM-ZINC COATED STEEL WITH COATING DESIGNATION AZ50 CONFORMING TO ASTM A792/A792M

## MATERIAL DIMENSIONS

PICKET	1" x 1" (25mm x 25mm) 16GA
RAILS	2" x 2" [50mm x 50mm] 14GA
POSTS REGULAR or BASE-PLATED	3" x 3" [76mm x 76mm] 14 GA
OPTIONAL POST REGULAR or BASE-PLATED	Larger profiles available - contact Medallion Fence
UPRIGHTS	2" x 2" [50mm x 50mm] 14GA

<b>WELDS</b>	Stainless Steel Mig Weld
--------------	--------------------------

<b>FITTINGS</b>	12 Gauge Stamp Forged Finish as below
-----------------	---------------------------------------

FITTING FASTENERS	JS1000 Plated Finish as below
-------------------	-------------------------------

OPTIONAL FASTENER	Tamper Proof Nuts
-------------------	-------------------

## FINISH

<b>GRADE</b>	Super Durable Polyester Powder Coat
OPTIONAL PRIMER	Zinc Rich Epoxy Powder Coat
OPTIONAL PRIMER (2)	E-Coat
STANDARD COLOUR	SEMI-GLOSS - BLACK
OTHER COLOURS	Green, Brown, White, Antique Silver
CUSTOM COLOURS	Per Specifications

<b>STANDARD HEIGHTS</b>	4'-3" 1295MM	5'-3" 1600MM	6'-3" 1905MM	7'-3" 2210MM	8'-3" 2514MM	9'-3" 2819MM	10'-3" 3124MM
	Custom heights are available (upon request)						

STANDARD GATES	Passage, Double Entry, Cantilever
----------------	-----------------------------------

## STANDARD POST SETTING & PANEL WIDTH

FOR FENCE HEIGHTS	PANEL WIDTH	POST SPACING [OPENING]
Up to 6' [1829mm]	88 3/4" [2255MM]	91 1/2" [2324MM]
Over 6' [1829mm]	88 3/4" [2255MM]	91 1/2" [2324MM]