



Medallion Fence

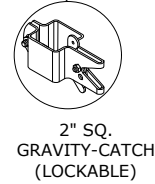
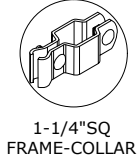
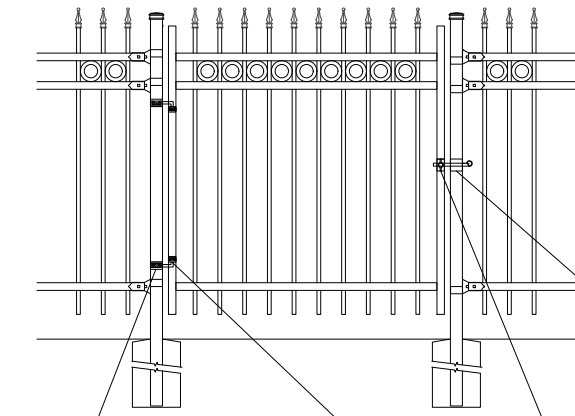
10651 KEELE STREET
 MAPLE, ONTARIO L6A 3Y9
 (T) 905-832-2922 || 1-800-794-1564 || (F) 905-832-1564
 info@medallionfence.com || www.medallionfence.com

Medallion Fence

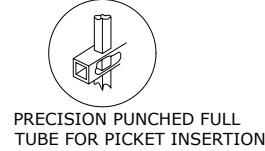
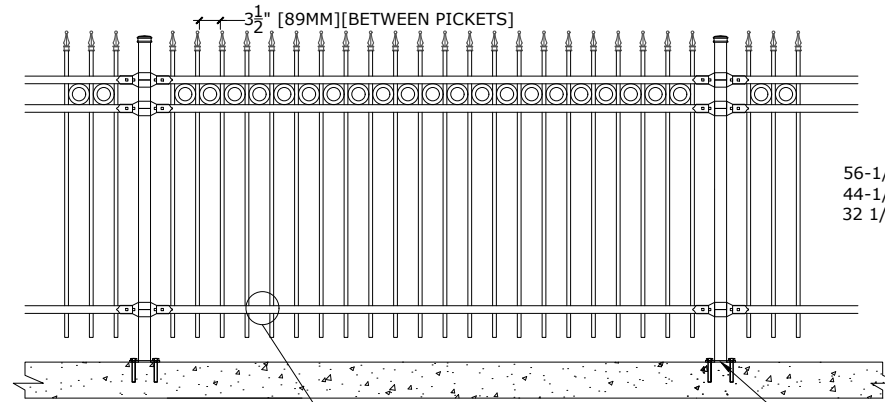
STYLE:
CAVALIER-DR-SF-REP

SERIES:
FAIRMONT™

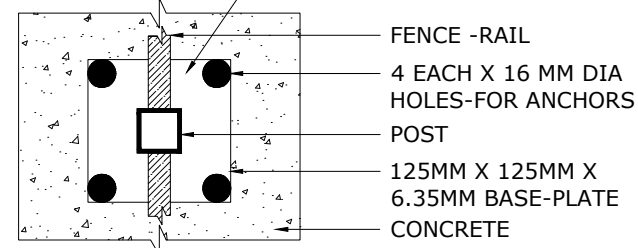
SINGLE-GATES OPENINGS
 AS REQUIRED 36", 48"
 OR 60" STANDARD



STANDARD POST SETTING - 94" [2388MM]
 STANDARD PANEL WIDTH - 92" [2337MM]

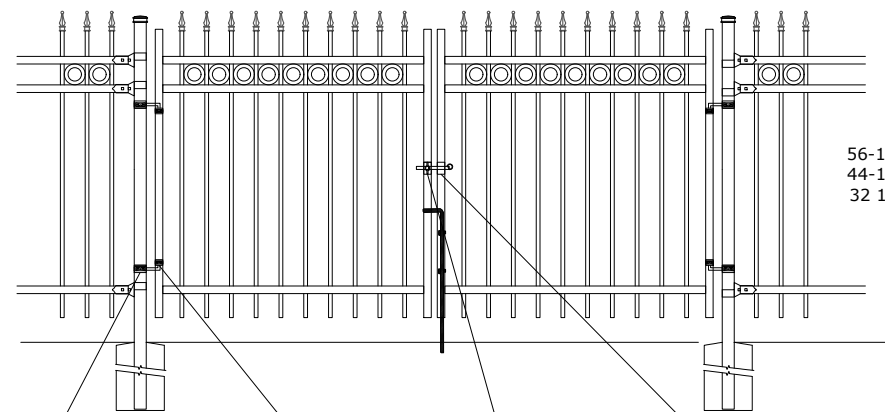


BASE-PLATE (OPTIONAL)



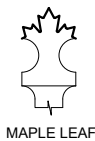
FENCE -RAIL
 4 EACH X 16 MM DIA HOLES-FOR ANCHORS
 POST
 125MM X 125MM X 6.35MM BASE-PLATE
 CONCRETE

DOUBLE-GATES OPENINGS AS
 REQUIRED 72", 96" OR 120"
 STANDARD



7 1/2" [191MM]
 3 1/2" [88MM]
 56-1/4" [1429mm] for 75" H
 44-1/4" [1124mm] for 63" H
 32 1/4" [819MM] FOR 51" H
 4" [102MM]

OPTIONAL CAST FINIAL

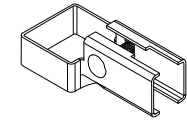


MAPLE LEAF

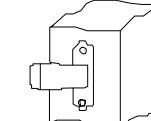


FLEUR DES LIS (FF)

BRACKET



MULTI-FUNCTIONAL BRACKET



WOOD/MASONRY BRACKET

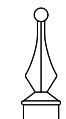
OPTIONAL POST CAPS



PYRAMID

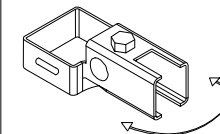


BALL

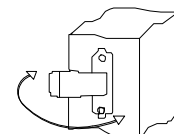


SPIRAL

SWIVEL BRACKET



SWIVEL BRACKET

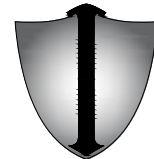


WOOD/MASONRY SWIVEL BRACKET

MATERIAL SPECIFICATIONS:

ARMOUR-SHIELD™
 BY MEDALLION FENCE

PROTECTED BY



ARMOUR-SHIELD™

SPECIFICATIONS

TUBE COMPOSITION - POSTS , RAILS & PICKETS

- MINIMUM YIELD STRENGTH: 45 KSI (310 MPA)
- MINIMUM TENSILE STRENGTH: 55 KSI (380 MPA)
- ASTM A787 (TUBE)
- TUBE MANUFACTURED FROM PRE-COATED ALUMINUM-ZINC COATED STEEL WITH COATING DESIGNATION AZ50 CONFORMING TO ASTM A792/A792M

MATERIAL DIMENSIONS

| | |
|---|--|
| PICKET | 5/8" x 5/8" (16mm x 16mm) 18 GA |
| RAILS | 1-1/4" x 1-1/4" (32mm x 32mm) 16 GA |
| POSTS REGULAR or BASE-PLATED | 2" x 2" (51mm x 51mm) 16 GA or 14 GA |
| OPTIONAL POST REGULAR or BASE-PLATED | 2-1/2" x 2-1/2" (64mmx64mm) 14 GA |
| UPRIGHTS | 1-1/4" x 1-1/4" (32mm x 32mm) 16 GA or 14 GA |

| | |
|-------------------|---------------------------------------|
| WELDS | Stainless Steel Mig Weld |
| FITTINGS | 14 Gauge Stamp Forged Finish as below |
| FITTING FASTENERS | JS1000 Plated Finish as below |
| OPTIONAL FASTENER | Tamper Proof Nuts |

FINISH

| | |
|---------------------|-------------------------------------|
| GRADE | Super Durable Polyester Powder Coat |
| OPTIONAL PRIMER | Zinc Rich Epoxy Powder Coat |
| OPTIONAL PRIMER (2) | E-Coat |
| STANDARD COLOUR | SEMI-GLOSS - BLACK |
| OTHER COLOURS | Green, Brown, White, Antique Silver |
| CUSTOM COLOURS | Per Specifications |

| | | | | | |
|-------------------------|---|----|---------------|---------------|---------------|
| STANDARD HEIGHTS | NA | NA | 51" 1295mm | 63" 1600mm | 75" 1905mm |
| | Custom heights are available (upon request) | | | | |

| | |
|----------------|-----------------------------------|
| STANDARD GATES | Passage, Double Entry, Cantilever |
|----------------|-----------------------------------|

STANDARD POST SETTING & PANEL WIDTH

| FOR FENCE HEIGHTS | PANEL WIDTH | POST SPACING [OPENING] |
|-------------------|--------------|------------------------|
| Up to 6' [1829mm] | 92" [2337MM] | 94" [2388 MM] |
| Over 6' [1829mm] | NA | |