

Medallion Fence

10651 KEELE STREET
 MAPLE, ONTARIO L6A 3Y9
 (T) 905-832-2922 || 1-800-794-1564 || (F) 905-832-1564
 info@medallionfence.com || www.medallionfence.com

Medallion Fence

STYLE:
CAVALIER DR PET GUARD - AL

SERIES:
FAIRMONT™

SPECIFICATIONS

TUBE COMPOSITION - POSTS , RAILS & PICKETS

- HIGH-STRENGTH EXTRUDED ALUMINUM ALLOY (6061-T4 & 6061-T6 TEMPERS)
- ULTIMATE TENSILE STRENGTH: ≈ 290 MPA (T4), ≈ 339 MPA (T6)
- YIELD STRENGTH: ≈ 210 MPA (T4), ≈ 317 MPA (T6)
- ELONGATION: ≈ 8%-16% (T6), UP TO ~16%+ (T4) DEPENDING ON THICKNESS

MATERIAL DIMENSIONS

| | |
|---|---|
| PICKET | 5/8" x 5/8" (16mm x 16mm) .065 Wall |
| RAILS | 1-1/4" x 1-1/4" (32mm x 32mm) .080 Wall |
| POSTS REGULAR or BASE-PLATED | 2" x 2" (51mm x 51mm) .125 Wall |
| OPTIONAL POST REGULAR or BASE-PLATED | 2-1/2" x 2-1/2" (64mmx64mm) .125 Wall |
| UPRIGHTS | 1-1/4" x 1-1/4" (32mm x 32mm) .125 Wall |

| | |
|-------------------|---------------------------------------|
| WELDS | Aluminum Mig Weld |
| FITTINGS | 14 Gauge Stamp Forged Finish as below |
| FITTING FASTENERS | JS1000 Plated Finish as below |
| OPTIONAL FASTENER | Tamper Proof Nuts |

FINISH

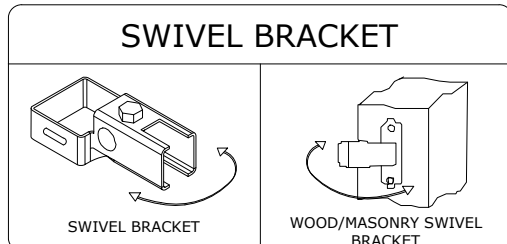
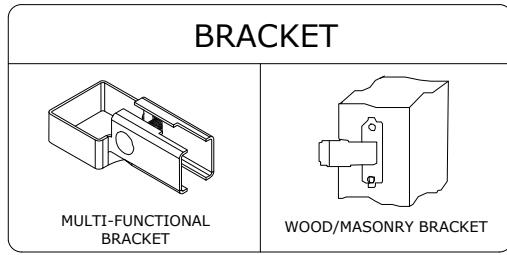
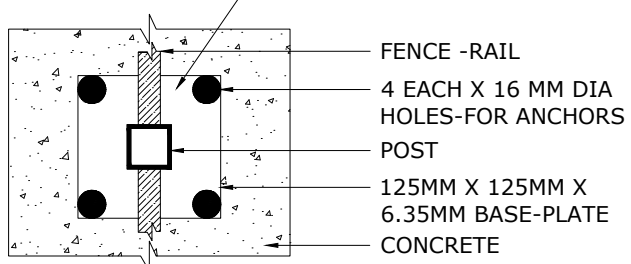
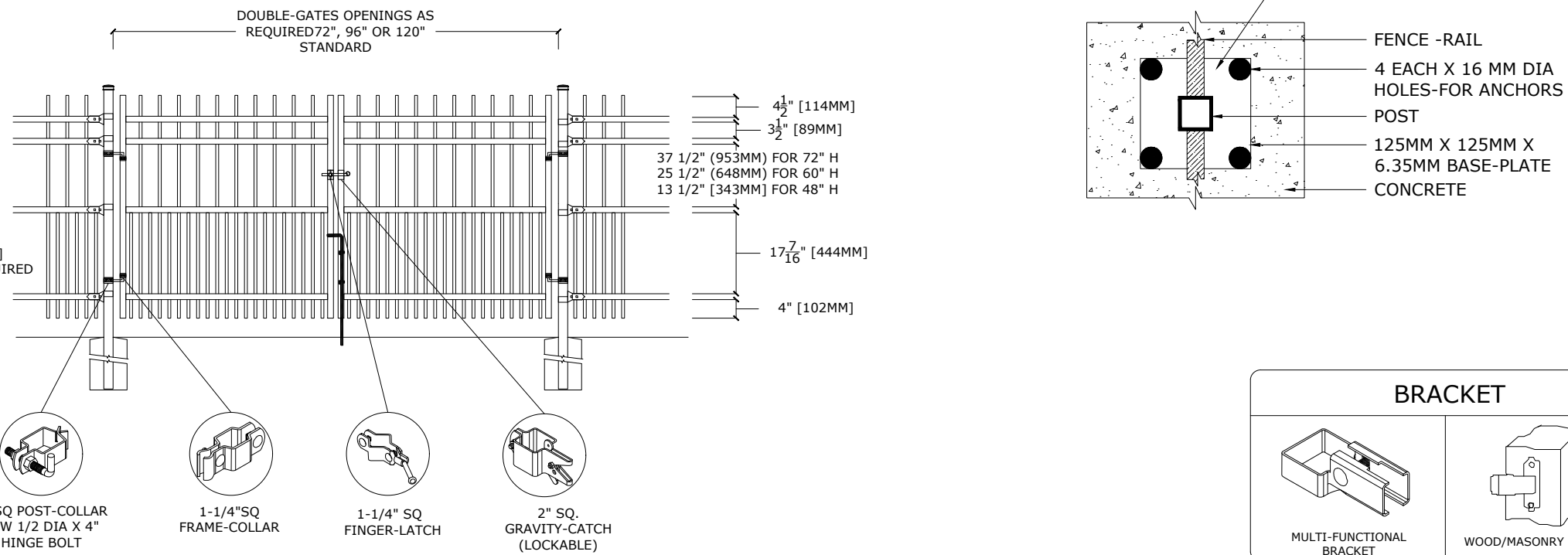
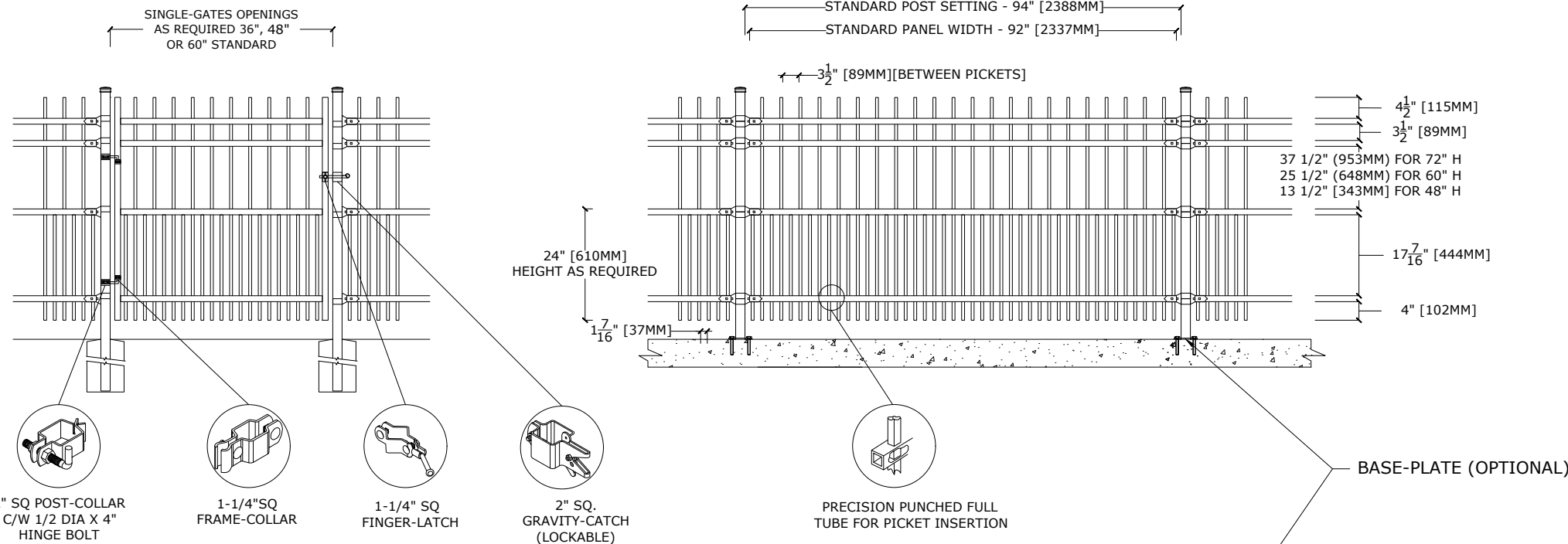
| | |
|---------------------|-------------------------------------|
| GRADE | Super Durable Polyester Powder Coat |
| OPTIONAL PRIMER | Zinc Rich Epoxy Powder Coat |
| OPTIONAL PRIMER (2) | E-Coat |
| STANDARD COLOUR | SEMI-GLOSS - BLACK |
| OTHER COLOURS | Green, Brown, White, Antique Silver |
| CUSTOM COLOURS | Per Specifications |

| | | | | | |
|-------------------------|---|----|---------------|---------------|---------------|
| STANDARD HEIGHTS | NA | NA | 48" 1219mm | 60" 1524mm | 72" 1892mm |
| | Custom heights are available for Panel & Pet Guard (upon request) | | | | |

| | |
|----------------|-----------------------------------|
| STANDARD GATES | Passage, Double Entry, Cantilever |
|----------------|-----------------------------------|

STANDARD POST SETTING & PANEL WIDTH

| FOR FENCE HEIGHTS | PANEL WIDTH | POST SPACING [OPENING] |
|-------------------|--------------|------------------------|
| Up to 6' [1829mm] | 92" [2337MM] | 94" [2388 MM] |
| Over 6' [1829mm] | NA | |



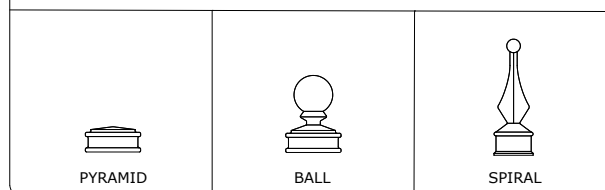
MATERIAL SPECIFICATIONS:

ALU-TUFF™
 BY MEDALLION FENCE

PROTECTED BY



OPTIONAL POST CAPS



MATERIAL SPECIFICATIONS:
 ALU-TUFF™
 BY MEDALLION FENCE

OPTIONAL POST CAPS

PYRAMID, BALL, SPIRAL

SWIVEL BRACKET

SWIVEL BRACKET, WOOD/MASONRY SWIVEL BRACKET