



# Medallion Fence

10651 KEELE STREET  
 MAPLE, ONTARIO L6A 3Y9  
 (T) 905-832-2922 || 1-800-794-1564 || (F) 905-832-1564  
 info@medallionfence.com || www.medallionfence.com

Medallion Fence

**STYLE:**  
**GUARDIAN**

**SERIES:**  
**OXFORD 75™**

## SPECIFICATIONS

### TUBE COMPOSITION - POSTS , RAILS & PICKETS

- MINIMUM YIELD STRENGTH: 45 KSI (310 MPA)
- MINIMUM TENSILE STRENGTH: 55 KSI (380 MPA)
- ASTM A787 (TUBE)
- TUBE MANUFACTURED FROM PRE-COATED ALUMINUM-ZINC COATED STEEL WITH COATING DESIGNATION AZ50 CONFORMING TO ASTM A792/A792M

## MATERIAL DIMENSIONS

PICKET	3/4" x 3/4" (19mm x 19mm) 18 GA
RAILS	1-1/2" x 1-1/2" (38mm x 38mm) 16 GA
POSTS REGULAR or BASE-PLATED	2-1/2" x 2-1/2" (64mm x 64mm) 16 GA or 14 GA
OPTIONAL POST REGULAR or BASE-PLATED	SCH 40 HDG 3" (76mm) Sq./4" (102mm) Sq 14 GA or 11 GA
UPRIGHTS	1-1/2" x 1-1/2" (38mm x 38mm) 16 GA or 14 GA

<b>WELDS</b>	Stainless Steel Mig Weld
<b>FITTINGS</b>	12 Gauge Stamp Forged Finish as below
FITTING FASTENERS	JS1000 Plated Finish as below
OPTIONAL FASTENER	Tamper Proof Nuts

## FINISH

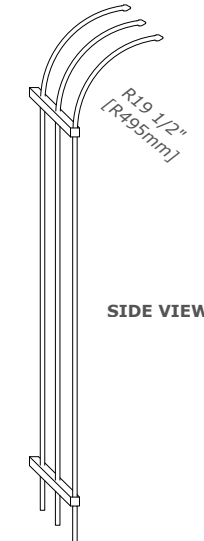
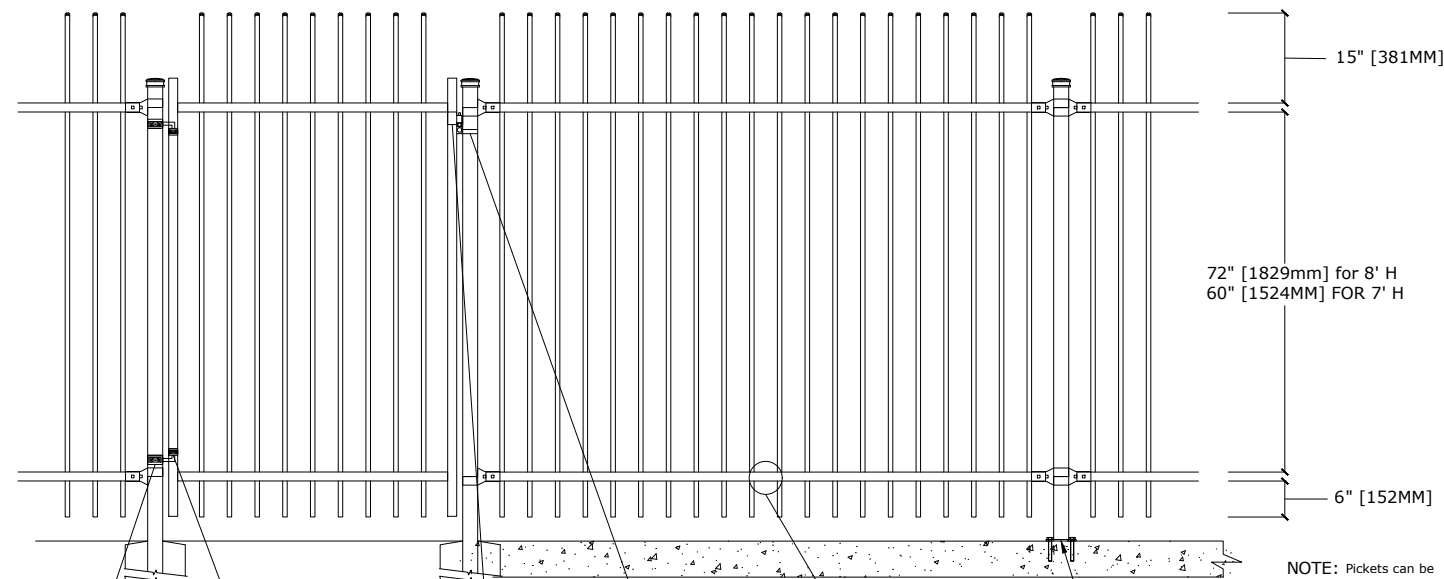
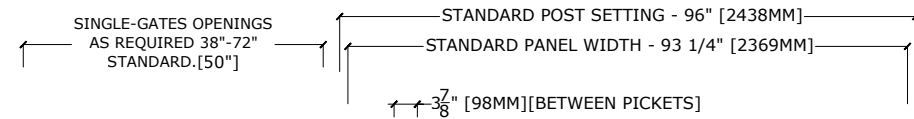
<b>GRADE</b>	Super Durable Polyester Powder Coat
OPTIONAL PRIMER	Zinc Rich Epoxy Powder Coat
OPTIONAL PRIMER (2)	E-Coat
STANDARD COLOUR	SEMI-GLOSS - BLACK
OTHER COLOURS	Green, Brown, White, Antique Silver
CUSTOM COLOURS	Per Specifications

<b>STANDARD HEIGHTS</b>	7' 2134mm	8' 2438mm
	Custom heights are available (upon request)	

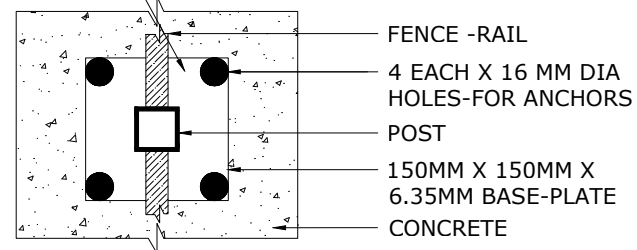
STANDARD GATES	Passage, Double Entry, Cantilever
----------------	-----------------------------------

## STANDARD POST SETTING & PANEL WIDTH

FOR FENCE HEIGHTS	PANEL WIDTH	POST SPACING [OPENING]
Up to 6' [1829mm]	NA	
Over 6' [1829mm]	93 1/4" [2369MM]	96" [2438MM]

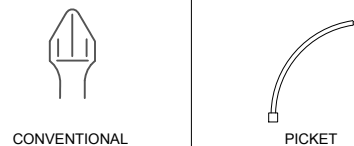


### BASE-PLATE (OPTIONAL)

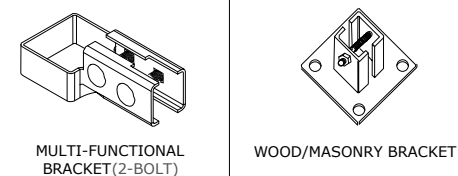


- 2-1/2" SQ POST-COLLAR C/W 1/2 DIA X 4" HINGE BOLT
- 1-1/2" SQ FRAME-COLLAR
- GRAVITY DROP LATCH
- LATCH-CATCH (LOCKABLE)
- PRECISION PUNCHED FULL TUBE FOR PICKET INSERTION

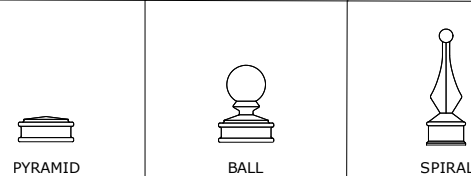
### PICKET DETAIL



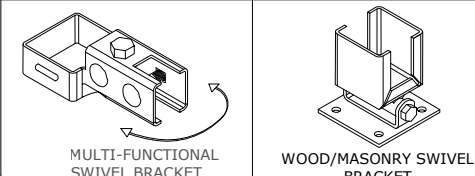
### BRACKET



### OPTIONAL POST CAPS



### SWIVEL BRACKET



## MATERIAL SPECIFICATIONS:

ARMOUR-SHIELD™  
 BY MEDALLION FENCE

PROTECTED BY

