



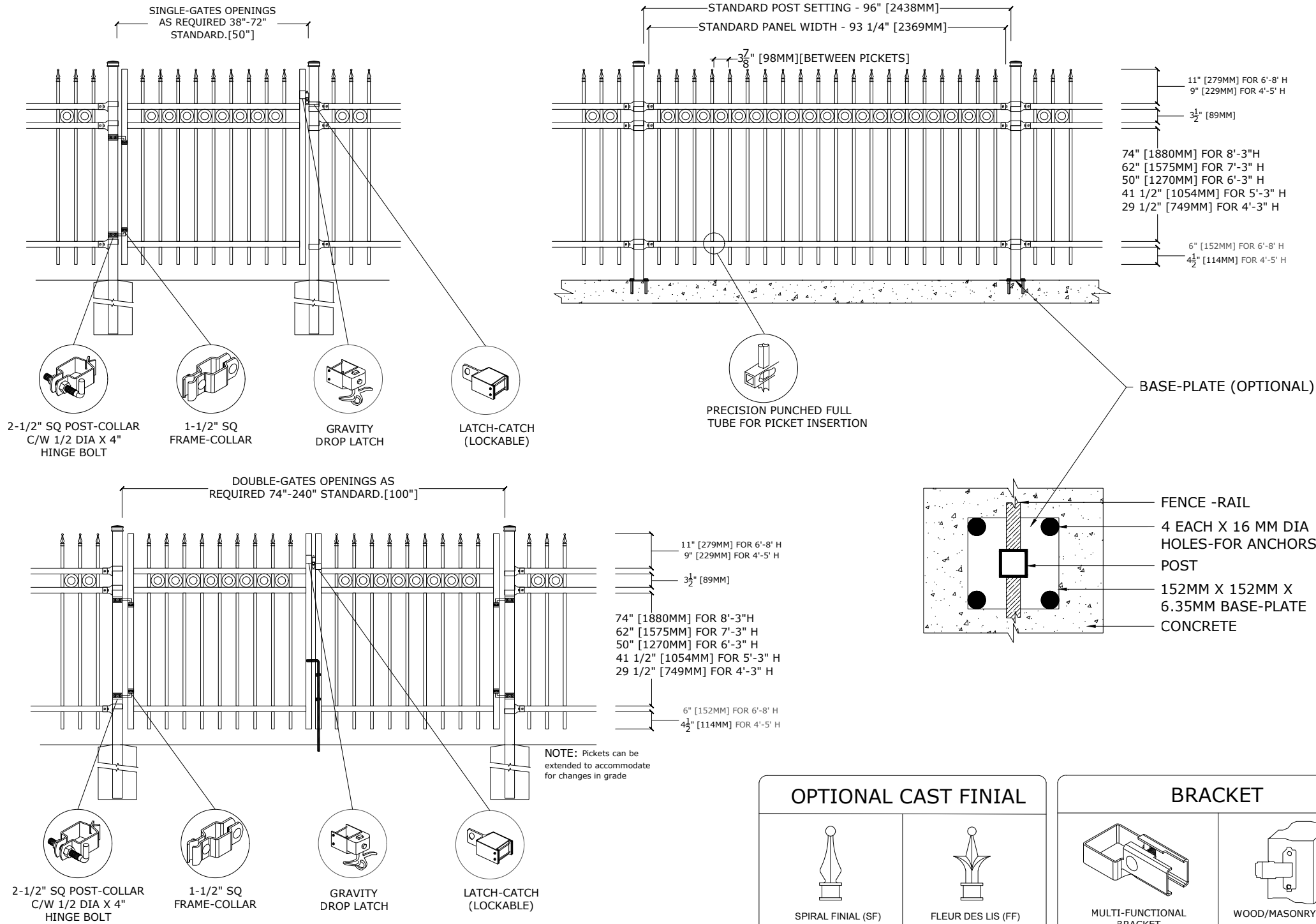
Medallion Fence

10651 KEELE STREET
 MAPLE, ONTARIO L6A 3Y9
 (T) 905-832-2922 || 1-800-794-1564 || (F) 905-832-1564
 info@medallionfence.com || www.medallionfence.com

Medallion Fence

STYLE:
CAVALIER-DR-SF-REO-AL

SERIES:
OXFORD 75™



SPECIFICATIONS

TUBE COMPOSITION - POSTS , RAILS & PICKETS

- HIGH-STRENGTH EXTRUDED ALUMINUM ALLOY (6061-T4 & 6061-T6 TEMPERS)
- ULTIMATE TENSILE STRENGTH: ≈ 290 MPA (T4), ≈ 339 MPA (T6)
- YIELD STRENGTH: ≈ 210 MPA (T4), ≈ 317 MPA (T6)
- ELONGATION: ≈ 8%-16% (T6), UP TO ~16%+ (T4) DEPENDING ON THICKNESS

MATERIAL DIMENSIONS

| | |
|---|--|
| PICKET | 3/4" x 3/4" (19mm x 19mm) .065 Wall |
| RAILS | 1-1/2" x 1-1/2" (38mm x 38mm) .080 Wall |
| POSTS REGULAR or BASE-PLATED | 2-1/2" x 2-1/2" (64mm x 64mm) .100 Wall |
| OPTIONAL POST REGULAR or BASE-PLATED | 3" x 3" (76mm x 76mm) .188 Wall requires cast aluminum mounting bracket |
| UPRIGHTS | 1-1/2" x 1-1/2" (38mm x 38mm) .100 Wall |

| | |
|-------------------|---------------------------------------|
| WELDS | Aluminum Mig Weld |
| FITTINGS | 12 Gauge Stamp Forged Finish as below |
| FITTING FASTENERS | JS1000 Plated Finish as below |
| OPTIONAL FASTENER | Tamper Proof Nuts |

FINISH

| | |
|---------------------|-------------------------------------|
| GRADE | Super Durable Polyester Powder Coat |
| OPTIONAL PRIMER | Zinc Rich Epoxy Powder Coat |
| OPTIONAL PRIMER (2) | E-Coat |
| STANDARD COLOUR | SEMI-GLOSS - BLACK |
| OTHER COLOURS | Green, Brown, White, Antique Silver |
| CUSTOM COLOURS | Per Specifications |

| | | | | | |
|-------------------------|---|----------------|----------------|----------------|----------------|
| STANDARD HEIGHTS | 4'-3" [1295mm] | 5'-3" [1600mm] | 6'-3" [1905mm] | 7'-3" [2210mm] | 8'-3" [2514mm] |
| | Custom heights are available (upon request) | | | | |

| | |
|----------------|-----------------------------------|
| STANDARD GATES | Passage, Double Entry, Cantilever |
|----------------|-----------------------------------|

STANDARD POST SETTING & PANEL WIDTH

| FOR FENCE HEIGHTS | PANEL WIDTH | POST SPACING [OPENING] |
|-------------------|------------------|------------------------|
| Up to 6' [1829mm] | 93 1/4" [2369MM] | 96" [2438MM] |
| Over 6' [1829mm] | 93 1/4" [2369MM] | 96" [2438MM] |

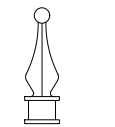
MATERIAL SPECIFICATIONS:

ALU-TUFF™
 BY MEDALLION FENCE

PROTECTED BY



OPTIONAL CAST FINIAL

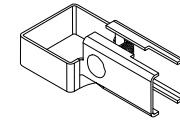


SPIRAL FINIAL (SF)

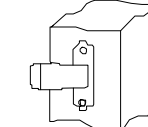


FLEUR DES LIS (FF)

BRACKET



MULTI-FUNCTIONAL BRACKET



WOOD/MASONRY BRACKET

OPTIONAL POST CAPS



PYRAMID

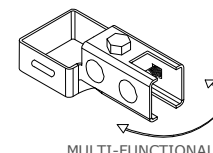


BALL

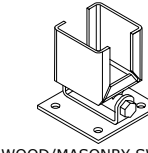


SPIRAL

SWIVEL BRACKET



MULTI-FUNCTIONAL SWIVEL BRACKET



WOOD/MASONRY SWIVEL BRACKET