



# Medallion Fence

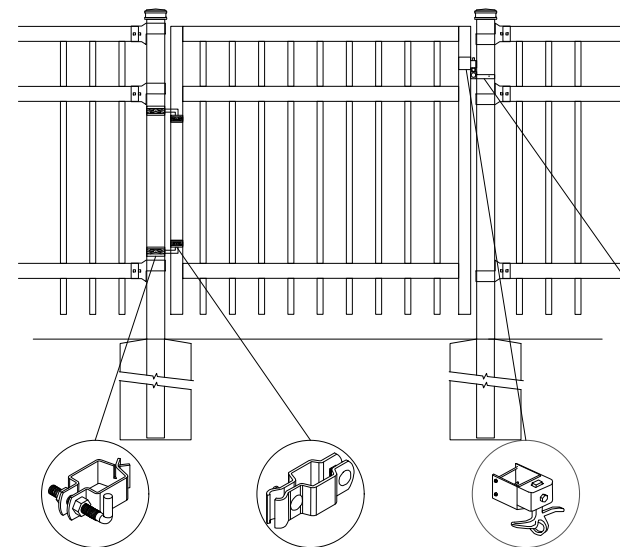
10651 KEELE STREET  
 MAPLE, ONTARIO L6A 3Y9  
 (T) 905-832-2922 || 1-800-794-1564 || (F) 905-832-1564  
 info@medallionfence.com || www.medallionfence.com

Medallion Fence

**STYLE:**  
**STANTON-AL**

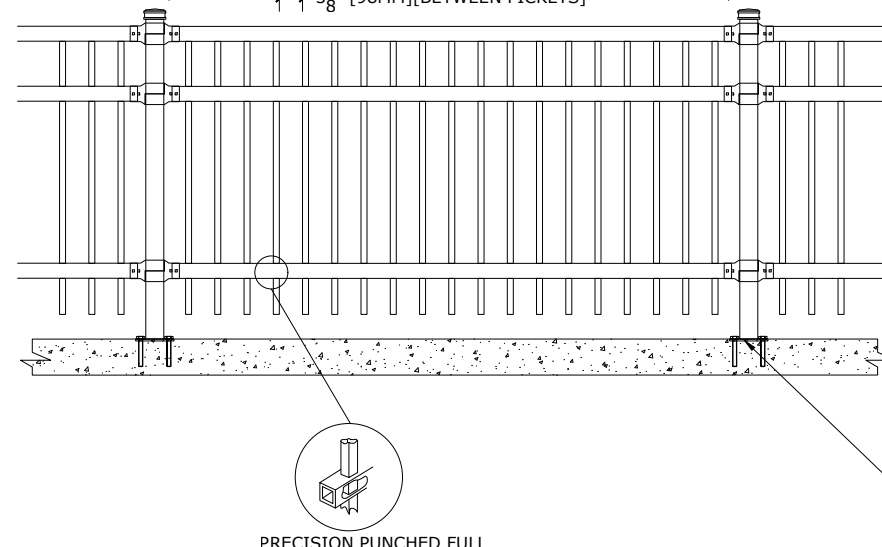
**SERIES:**  
**PRESTON™**

SINGLE-GATES OPENINGS  
 AS REQUIRED 38"-72"  
 STANDARD.[52"]



- 3" SQ POST-COLLAR  
C/W 1/2 DIA X 4" HINGE BOLT
- 2" SQ FRAME-COLLAR
- GRAVITY DROP LATCH
- LATCH-CATCH (LOCKABLE)

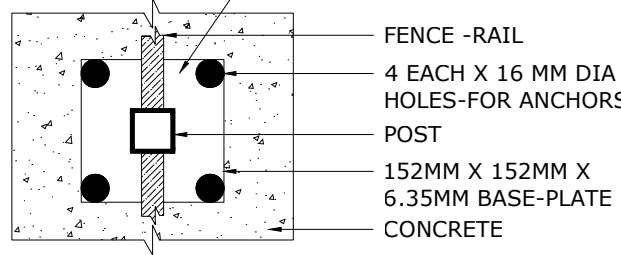
STANDARD POST SETTING - 96" [2438MM]  
 STANDARD PANEL WIDTH - 93 1/4" [2369MM]  
 3 7/8" [98MM][BETWEEN PICKETS]



PRECISION PUNCHED FULL TUBE FOR PICKET INSERTION

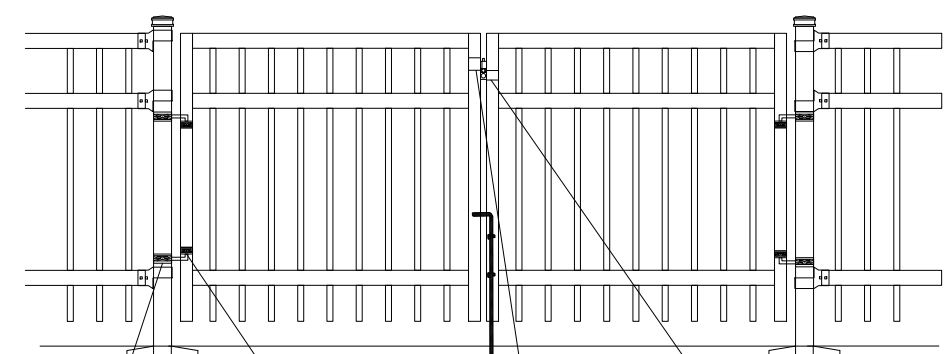
- 7 1/2" [191MM]
- 99" [2515 MM] FOR 10' H  
87" [2210 MM] FOR 9' H  
75" [1905 MM] FOR 8' H  
63" [1600 MM] FOR 7' H  
51" [1295 MM] FOR 6' H  
39" [991 MM] FOR 5' H  
27" [686MM] FOR 4' H
- 6" [152MM]

BASE-PLATE (OPTIONAL)



- FENCE -RAIL
- 4 EACH X 16 MM DIA HOLES-FOR ANCHORS
- POST
- 152MM X 152MM X 6.35MM BASE-PLATE
- CONCRETE

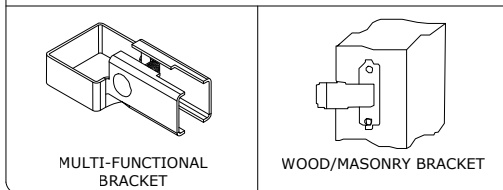
DOUBLE-GATES OPENINGS AS  
 REQUIRED 74"-240" STANDARD.[104"]



- 3" SQ POST-COLLAR  
C/W 1/2 DIA X 4" HINGE BOLT
- 2" SQ FRAME-COLLAR
- GRAVITY DROP LATCH
- LATCH-CATCH (LOCKABLE)

NOTE: Pickets can be extended to accommodate for changes in grade

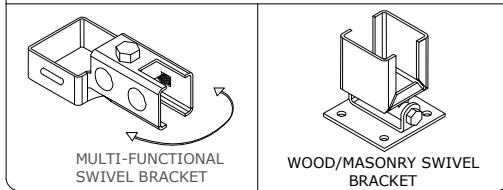
### BRACKET



MULTI-FUNCTIONAL BRACKET

WOOD/MASONRY BRACKET

### SWIVEL BRACKET



MULTI-FUNCTIONAL SWIVEL BRACKET

WOOD/MASONRY SWIVEL BRACKET

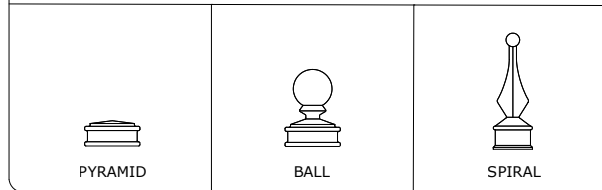
### MATERIAL SPECIFICATIONS:

ALU-TUFF™  
 BY MEDALLION FENCE

### PROTECTED BY



### OPTIONAL POST CAPS



PYRAMID

BALL

SPIRAL

### SPECIFICATIONS

#### TUBE COMPOSITION - POSTS , RAILS & PICKETS

- HIGH-STRENGTH EXTRUDED ALUMINUM ALLOY (6061-T4 & 6061-T6 TEMPERS)
- ULTIMATE TENSILE STRENGTH: ≈ 290 MPA (T4), ≈ 339 MPA (T6)
- YIELD STRENGTH: ≈ 210 MPA (T4), ≈ 317 MPA (T6)
- ELONGATION: ≈ 8%-16% (T6), UP TO ~16%+ (T4) DEPENDING ON THICKNESS

### MATERIAL DIMENSIONS

PICKET	1" x 1" (25mm x 25mm) .065 Wall
RAILS	2-1/2" x 1-1/2" (64mm x 38mm) .125 Wall
POSTS REGULAR or BASE-PLATED	3" x 3" [76mm x 76mm] .188 Wall
OPTIONAL POST REGULAR or BASE-PLATED	Larger profiles available - contact Medallion Fence
UPRIGHTS	2" x 2" [51mm x 51mm] .188Wall

<b>WELDS</b>	Aluminum Mig Weld
<b>FITTINGS</b>	12 Gauge Stamp Forged Finish as below
FITTING FASTENERS	JS1000 Plated Finish as below
OPTIONAL FASTENER	Tamper Proof Nuts

### FINISH

<b>GRADE</b>	Super Durable Polyester Powder Coat
OPTIONAL PRIMER	Zinc Rich Epoxy Powder Coat
OPTIONAL PRIMER (2)	E-Coat
STANDARD COLOUR	SEMI-GLOSS - BLACK
OTHER COLOURS	Green, Brown, White, Antique Silver
CUSTOM COLOURS	Per Specifications

<b>STANDARD HEIGHTS</b>	4' 1219MM	5' 1524MM	6' 1892MM	7' 2134MM	8' 2438MM	9' 2743MM	10' 3048MM
	Custom heights are available (upon request)						

STANDARD GATES	Passage, Double Entry, Cantilever
----------------	-----------------------------------

### STANDARD POST SETTING & PANEL WIDTH

FOR FENCE HEIGHTS	PANEL WIDTH	POST SPACING [OPENING]
Up to 6' [1829mm]	93 1/4" [2369MM]	96" [2438 MM]
Over 6' [1829mm]	93 1/4" [2369MM]	96" [2438 MM]