

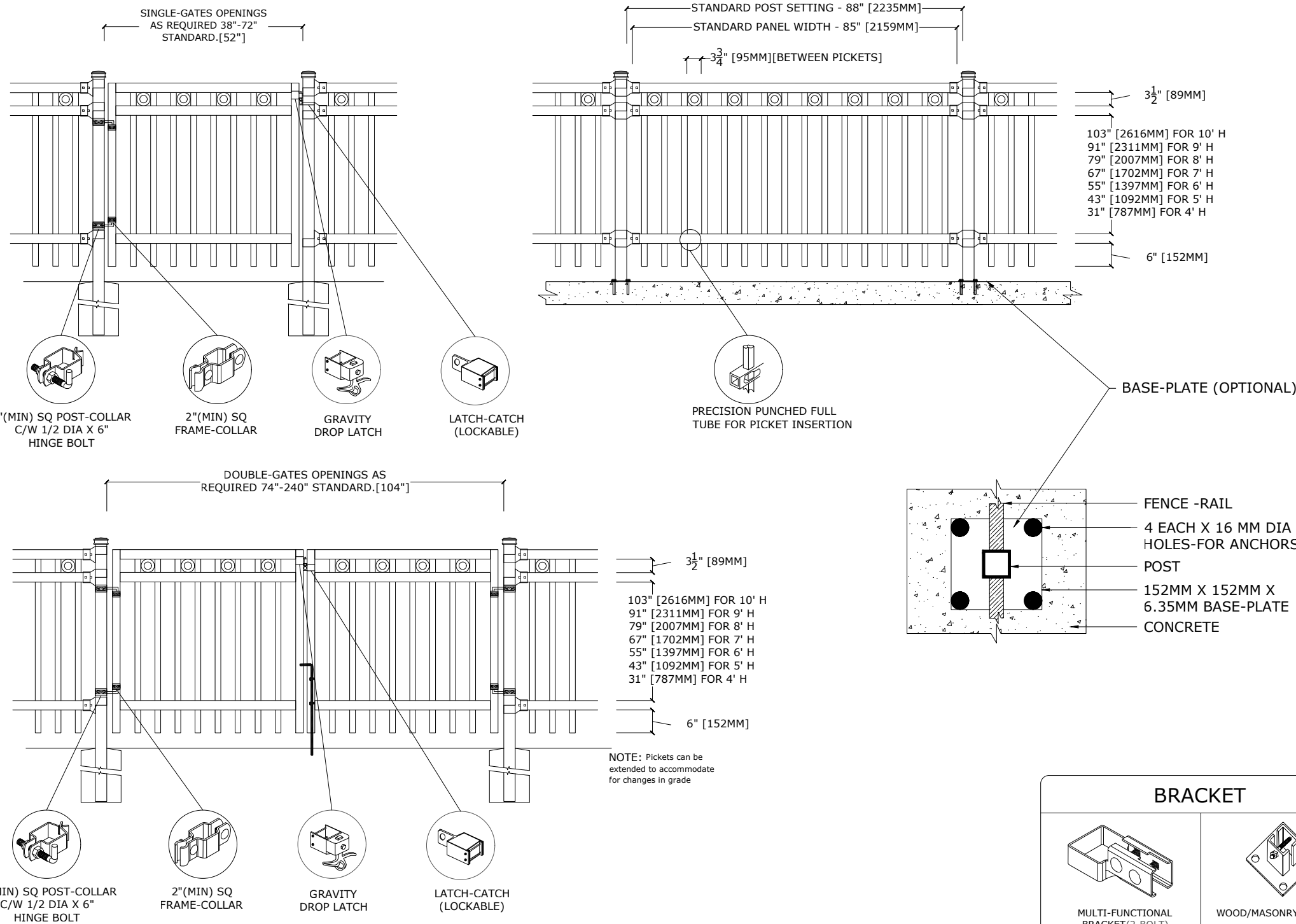
# Medallion Fence

10651 KEELE STREET  
 MAPLE, ONTARIO L6A 3Y9  
 (T) 905-832-2922 || 1-800-794-1564 || (F) 905-832-1564  
 info@medallionfence.com || www.medallionfence.com

Medallion Fence

**STYLE:**  
**STANTON-REO**

**SERIES:**  
**PRESTON RP™**



## SPECIFICATIONS

### TUBE COMPOSITION - POSTS , RAILS & PICKETS

- MINIMUM YIELD STRENGTH: 45 KSI (310 MPA)
- MINIMUM TENSILE STRENGTH: 55 KSI (380 MPA)
- ASTM A787 (TUBE)
- TUBE MANUFACTURED FROM PRE-COATED ALUMINUM-ZINC COATED STEEL WITH COATING DESIGNATION AZ50 CONFORMING TO ASTM A792/A792M

## MATERIAL DIMENSIONS

PICKET	1-1/2" x 3/4" (38mm x 19mm) 16GA
RAILS	2-1/2" x 1-1/2" (64mm x 38mm) 16 GA
POSTS REGULAR or BASE-PLATED	3" x 3" [76mm x 76mm] 14 GA
OPTIONAL POST REGULAR or BASE-PLATED	3" x 3" (76mmx76mm) 11 GA 4" x 4" (102mmx102mm) 11GA
UPRIGHTS	2" x 2" [51mm x 51mm] 14GA

<b>WELDS</b>	Stainless Steel Mig Weld
<b>FITTINGS</b>	12 Gauge Stamp Forged Finish as below
FITTING FASTENERS	JS1000 Plated Finish as below
OPTIONAL FASTENER	Tamper Proof Nuts

## FINISH

<b>GRADE</b>	Super Durable Polyester Powder Coat
OPTIONAL PRIMER	Zinc Rich Epoxy Powder Coat
OPTIONAL PRIMER (2)	E-Coat
STANDARD COLOUR	SEMI-GLOSS - BLACK
OTHER COLOURS	Green, Brown, White, Antique Silver
CUSTOM COLOURS	Per Specifications

<b>STANDARD HEIGHTS</b>	4'	5'	6'	7'	8'	9'	10'
	1219MM	1524MM	1892MM	2134MM	2438MM	2743MM	3048MM
Custom heights are available (upon request)							

STANDARD GATES	Passage, Double Entry, Cantilever
----------------	-----------------------------------

## STANDARD POST SETTING & PANEL WIDTH

<b>FOR FENCE HEIGHTS</b>	<b>PANEL WIDTH</b>	<b>POST SPACING [OPENING]</b>
Up to 6' [1829mm]	85" [2159MM]	88" [2235MM]
Over 6' [1829mm]	85" [2159MM]	88" [2235MM]

## MATERIAL SPECIFICATIONS:

ARMOUR-SHIELD™  
 BY MEDALLION FENCE

## PROTECTED BY



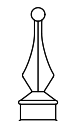
## OPTIONAL POST CAPS



PYRAMID

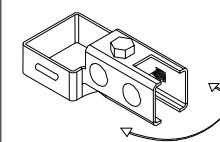


BALL

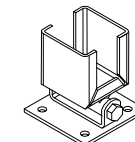


SPIRAL

## SWIVEL BRACKET

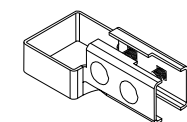


MULTI-FUNCTIONAL SWIVEL BRACKET

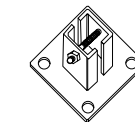


WOOD/MASONRY SWIVEL BRACKET

## BRACKET



MULTI-FUNCTIONAL BRACKET (2-BOLT)



WOOD/MASONRY BRACKET