



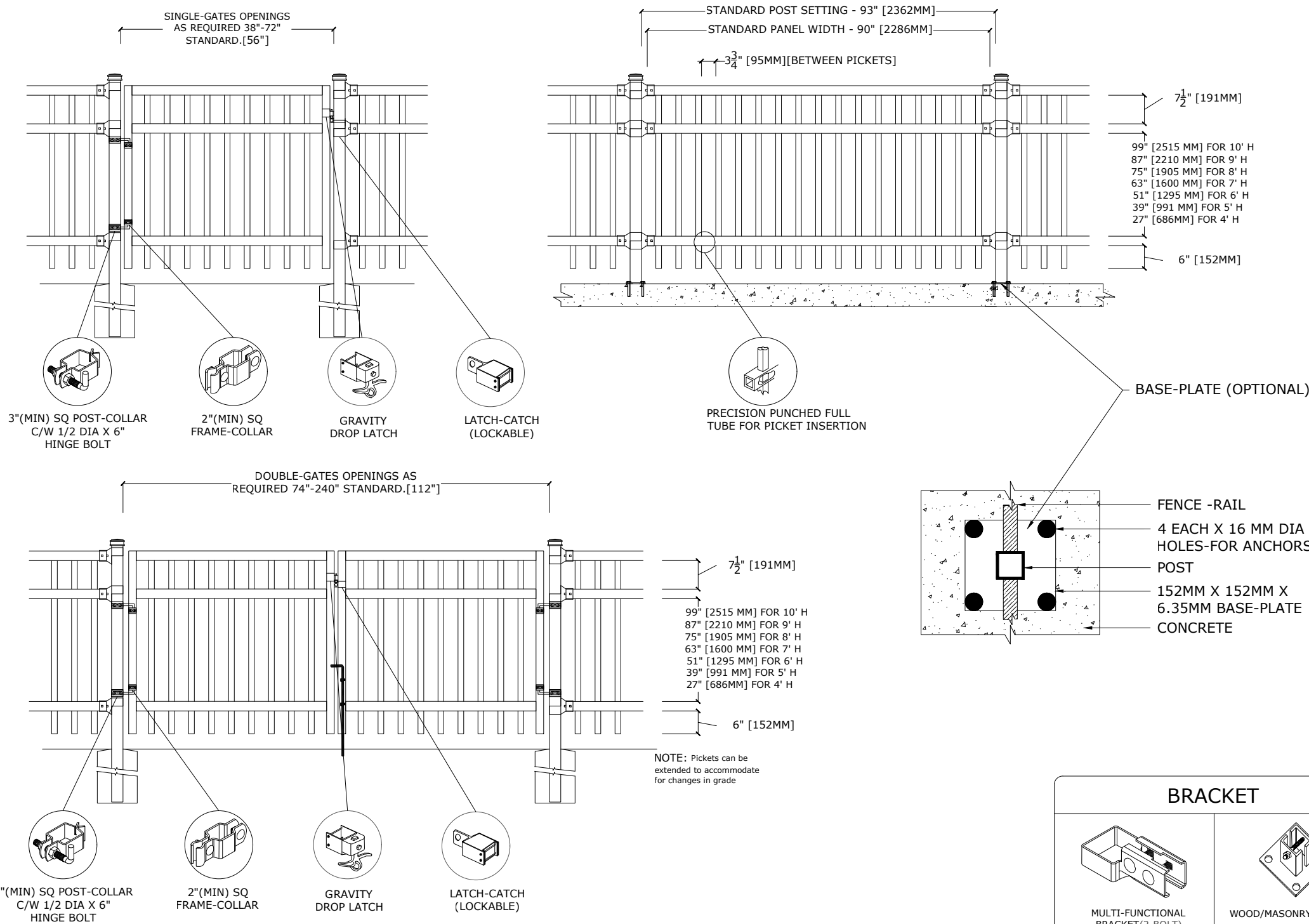
Medallion Fence

10651 KEELE STREET
 MAPLE, ONTARIO L6A 3Y9
 (T) 905-832-2922 || 1-800-794-1564 || (F) 905-832-1564
 info@medallionfence.com || www.medallionfence.com

Medallion Fence

STYLE:
STANTON-AL

SERIES:
PRESTON RP™



SPECIFICATIONS

TUBE COMPOSITION - POSTS , RAILS & PICKETS

- HIGH-STRENGTH EXTRUDED ALUMINUM ALLOY (6061-T4 & 6061-T6 TEMPERS)
- ULTIMATE TENSILE STRENGTH: ≈ 290 MPA (T4), ≈ 339 MPA (T6)
- YIELD STRENGTH: ≈ 210 MPA (T4), ≈ 317 MPA (T6)
- ELONGATION: ≈ 8%-16% (T6), UP TO ~16%+ (T4) DEPENDING ON THICKNESS

MATERIAL DIMENSIONS

| | |
|---|--|
| PICKET | 1-1/2" x 3/4" (38mm x 19mm) .065 Wall |
| RAILS | 2-1/2" x 1-1/2" (64mm x 38mm) .125 Wall |
| POSTS REGULAR or BASE-PLATED | 3" x 3" [76mm x 76mm] .188 Wall |
| OPTIONAL POST REGULAR or BASE-PLATED | Larger profiles available - contact Medallion Fence |
| UPRIGHTS | 2" x 2" [51mm x 51mm] .188Wall |

| | |
|-------------------|---------------------------------------|
| WELDS | Aluminum Mig Weld |
| FITTINGS | 12 Gauge Stamp Forged Finish as below |
| FITTING FASTENERS | JS1000 Plated Finish as below |
| OPTIONAL FASTENER | Tamper Proof Nuts |

FINISH

| | |
|---------------------|-------------------------------------|
| GRADE | Super Durable Polyester Powder Coat |
| OPTIONAL PRIMER | Zinc Rich Epoxy Powder Coat |
| OPTIONAL PRIMER (2) | E-Coat |
| STANDARD COLOUR | SEMI-GLOSS - BLACK |
| OTHER COLOURS | Green, Brown, White, Antique Silver |
| CUSTOM COLOURS | Per Specifications |

| | | | | | | | |
|---|--------|--------|--------|--------|--------|--------|--------|
| STANDARD HEIGHTS | 4' | 5' | 6' | 7' | 8' | 9' | 10' |
| | 1219MM | 1524MM | 1892MM | 2134MM | 2438MM | 2743MM | 3048MM |
| Custom heights are available (upon request) | | | | | | | |

| | |
|----------------|-----------------------------------|
| STANDARD GATES | Passage, Double Entry, Cantilever |
|----------------|-----------------------------------|

STANDARD POST SETTING & PANEL WIDTH

| | | |
|--------------------------|--------------------|-------------------------------|
| FOR FENCE HEIGHTS | PANEL WIDTH | POST SPACING [OPENING] |
| Up to 6' [1829mm] | 90" [2286MM] | 93" [2362MM] |
| Over 6' [1829mm] | 90" [2286MM] | 93" [2362MM] |

MATERIAL SPECIFICATIONS:

ALU-TUFF™
 BY MEDALLION FENCE

PROTECTED BY



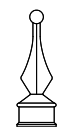
OPTIONAL POST CAPS



PYRAMID

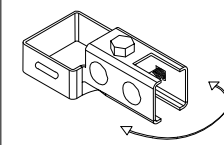


BALL

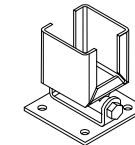


SPIRAL

SWIVEL BRACKET

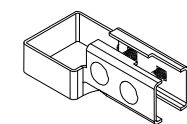


MULTI-FUNCTIONAL SWIVEL BRACKET

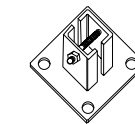


WOOD/MASONRY SWIVEL BRACKET

BRACKET



MULTI-FUNCTIONAL BRACKET (2-BOLT)



WOOD/MASONRY BRACKET