



Medallion Fence

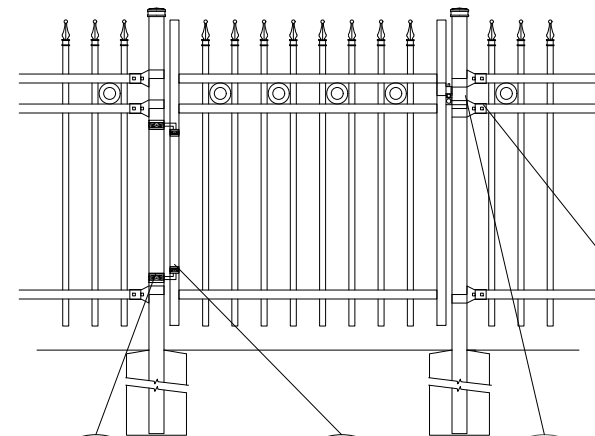
10651 KEELE STREET
 MAPLE, ONTARIO L6A 3Y9
 (T) 905-832-2922 || 1-800-794-1564 || (F) 905-832-1564
 info@medallionfence.com || www.medallionfence.com

Medallion Fence

STYLE:
CAVALIER-DR-SF-REO

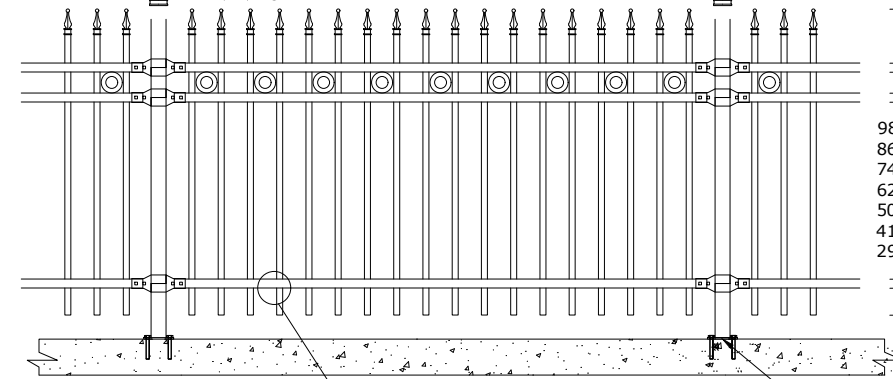
SERIES:
OXFORD™

SINGLE-GATES OPENINGS
 AS REQUIRED 38"-72"
 STANDARD.[48"]



- 2-1/2" SQ POST-COLLAR
C/W 1/2 DIA X 4"
HINGE BOLT
- 1-1/2" SQ
FRAME-COLLAR
- GRAVITY
DROP LATCH
- LATCH-CATCH
(LOCKABLE)

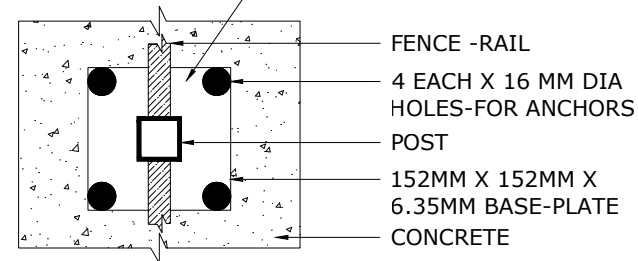
STANDARD POST SETTING - 91 1/2" [2324MM]
 STANDARD PANEL WIDTH - 88 3/4" [2255MM]
 3/8" [98MM] [BETWEEN PICKETS]



- 11" (279MM) FOR 6'-10" H
9" (229MM) FOR 4'-5" H
- 3/2" [89MM]
- 98" (2489MM) FOR 10' H
86" (2184MM) FOR 9' H
74" (1880MM) FOR 8' H
62" (1575MM) FOR 7' H
50" (1270MM) FOR 6' H
41-1/2" (1054MM) FOR 5' H
29 1/2" [749MM] FOR 4' H
- 6" [152MM] FOR 6'-10" H
4 1/2" [114MM] FOR 4'-5" H

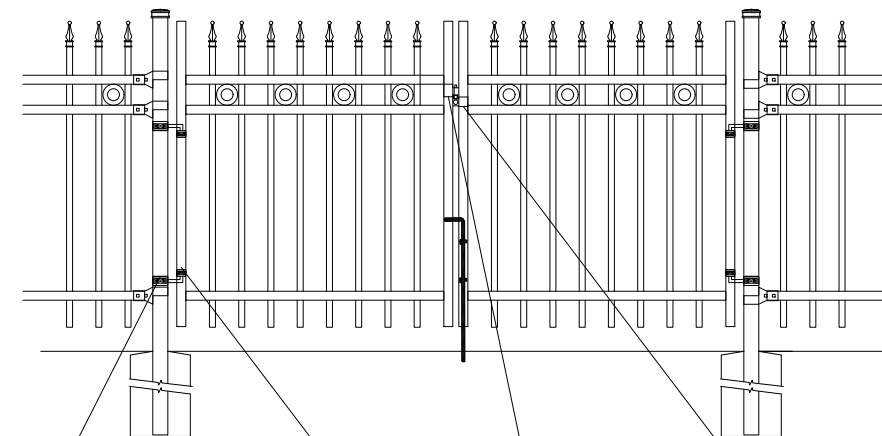
- PRECISION PUNCHED FULL
TUBE FOR PICKET INSERTION

BASE-PLATE (OPTIONAL)



- FENCE -RAIL
- 4 EACH X 16 MM DIA
HOLES-FOR ANCHORS
- POST
- 152MM X 152MM X
6.35MM BASE-PLATE
- CONCRETE

DOUBLE-GATES OPENINGS AS
 REQUIRED 74"-240" STANDARD.[96"]

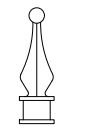


- 2-1/2" SQ POST-COLLAR
C/W 1/2 DIA X 4"
HINGE BOLT
- 1-1/2" SQ
FRAME-COLLAR
- GRAVITY
DROP LATCH
- LATCH-CATCH
(LOCKABLE)

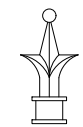
- 11" (279MM) FOR 6'-10" H
9" (229MM) FOR 4'-5" H
- 3/2" [89MM]
- 98" (2489MM) FOR 10' H
86" (2184MM) FOR 9' H
74" (1880MM) FOR 8' H
62" (1575MM) FOR 7' H
50" (1270MM) FOR 6' H
41-1/2" (1054MM) FOR 5' H
29 1/2" [749MM] FOR 4' H
- 6" [152MM] FOR 6'-10" H
4 1/2" [114MM] FOR 4'-5" H

NOTE: Pickets can be
 extended to accommodate
 for changes in grade

OPTIONAL CAST FINIAL

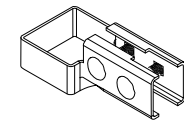


SPIRAL FINIAL (SF)

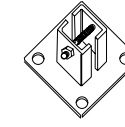


FLEUR DES LIS (FF)

BRACKET



MULTI-FUNCTIONAL
BRACKET (2-BOLT)



WOOD/MASONRY BRACKET

OPTIONAL POST CAPS



PYRAMID

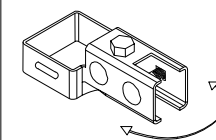


BALL

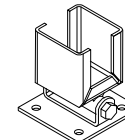


SPIRAL

SWIVEL BRACKET



MULTI-FUNCTIONAL
SWIVEL BRACKET



WOOD/MASONRY SWIVEL
BRACKET

MATERIAL SPECIFICATIONS:

ARMOUR-SHIELD™
 BY MEDALLION FENCE

PROTECTED BY



ARMOUR-SHIELD™

SPECIFICATIONS

TUBE COMPOSITION - POSTS , RAILS & PICKETS

- MINIMUM YIELD STRENGTH: 45 KSI (310 MPA)
- MINIMUM TENSILE STRENGTH: 55 KSI (380 MPA)
- ASTM A787 (TUBE)
- TUBE MANUFACTURED FROM PRE-COATED ALUMINUM-ZINC COATED STEEL WITH COATING DESIGNATION AZ50 CONFORMING TO ASTM A792/A792M

MATERIAL DIMENSIONS

PICKET	1" x 1" (25mm x 25mm) 16 GA
RAILS	1-1/2" x 1-1/2" (38mm x 38mm) 14 GA
POSTS REGULAR or BASE-PLATED	2-1/2" x 2-1/2" (64mm x 64mm) 14 GA
OPTIONAL POST REGULAR or BASE-PLATED	HSS 3" (76mm) Sq./4" (102mm) Sq./6" (152mm) Sq.
UPRIGHTS	1-1/2" x 1-1/2" (38mm x 38mm) 14 GA

WELDS	Stainless Steel Mig Weld
FITTINGS	12 Gauge Stamp Forged Finish as below
FITTING FASTENERS	JS1000 Plated Finish as below
OPTIONAL FASTENER	Tamper Proof Nuts

FINISH

GRADE	Super Durable Polyester Powder Coat
OPTIONAL PRIMER	Zinc Rich Epoxy Powder Coat
OPTIONAL PRIMER (2)	E-Coat
STANDARD COLOUR	SEMI-GLOSS - BLACK
OTHER COLOURS	Green, Brown, White, Antique Silver
CUSTOM COLOURS	Per Specifications

STANDARD HEIGHTS	4'-3" 1295MM	5'-3" 1600MM	6'-3" 1905MM	7'-3" 2210MM	8'-3" 2514MM	9'-3" 2819MM	10'-3" 3124MM
	Custom heights are available (upon request)						

STANDARD GATES	Passage, Double Entry, Cantilever
----------------	-----------------------------------

STANDARD POST SETTING & PANEL WIDTH

FOR FENCE HEIGHTS	PANEL WIDTH	POST SPACING [OPENING]
Up to 6' [1829mm]	88 3/4" [2255MM]	91 1/2" [2324MM]
Over 6' [1829mm]	88 3/4" [2255MM]	91 1/2" [2324MM]