



Medallion Fence

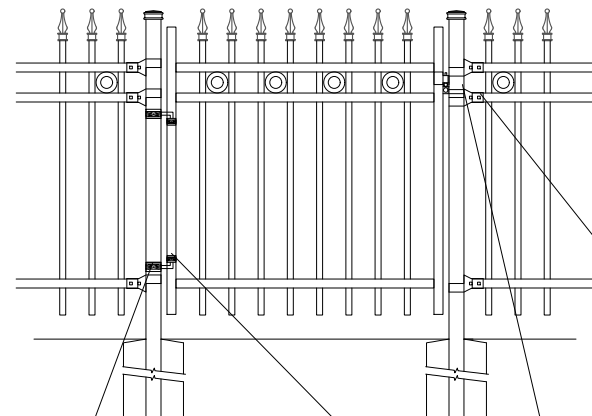
10651 KEELE STREET
MAPLE, ONTARIO L6A 3Y9
(T) 905-832-2922 || 1-800-794-1564 || (F) 905-832-1564
info@medallionfence.com || www.medallionfence.com

Medallion Fence

STYLE:
CAVALIER-DR-SF-REO-AL

SERIES:
OXFORD™

SINGLE-GATES OPENINGS
AS REQUIRED 38"-72"
STANDARD.[48"]



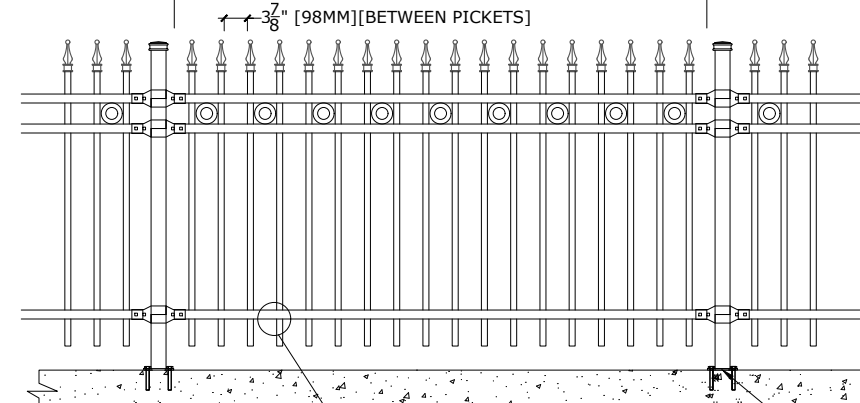
2-1/2" SQ POST-COLLAR
C/W 1/2 DIA X 4"
HINGE BOLT

1-1/2" SQ
FRAME-COLLAR

GRAVITY
DROP LATCH

LATCH-CATCH
(LOCKABLE)

STANDARD POST SETTING - 91 1/2" [2324MM]
STANDARD PANEL WIDTH - 88 3/4" [2255MM]



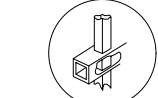
3 7/8" [98MM][BETWEEN PICKETS]

11" (279MM) FOR 6'-10" H
9" (229MM) FOR 4'-5" H

3 1/2" [89MM]

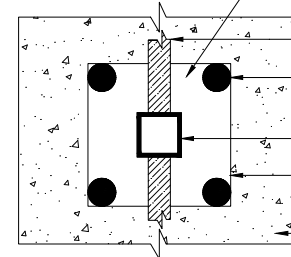
98" (2489MM) FOR 10' H
86" (2184MM) FOR 9' H
74" (1880MM) FOR 8' H
62" (1575MM) FOR 7' H
50" (1270MM) FOR 6' H
41-1/2" (1054MM) FOR 5' H
29 1/2" [749MM] FOR 4' H

6" [152MM] FOR 6'-10" H
4 1/2" [114MM] FOR 4'-5" H



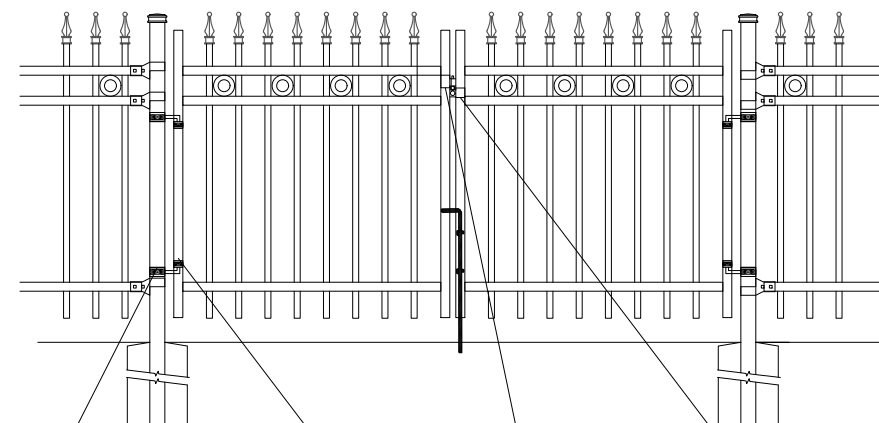
PRECISION PUNCHED FULL
TUBE FOR PICKET INSERTION

BASE-PLATE (OPTIONAL)



FENCE -RAIL
4 EACH X 16 MM DIA
HOLES-FOR ANCHORS
POST
152MM X 152MM X
6.35MM BASE-PLATE
CONCRETE

DOUBLE-GATES OPENINGS AS
REQUIRED 74"-240" STANDARD.[96"]



11" (279MM) FOR 6'-10" H
9" (229MM) FOR 4'-5" H

3 1/2" [89MM]

98" (2489MM) FOR 10' H
86" (2184MM) FOR 9' H
74" (1880MM) FOR 8' H
62" (1575MM) FOR 7' H
50" (1270MM) FOR 6' H
41-1/2" (1054MM) FOR 5' H
29 1/2" [749MM] FOR 4' H

6" [152MM] FOR 6'-10" H
4 1/2" [114MM] FOR 4'-5" H

NOTE: Pickets can be
extended to accommodate
for changes in grade

2-1/2" SQ POST-COLLAR
C/W 1/2 DIA X 4"
HINGE BOLT

1-1/2" SQ
FRAME-COLLAR

GRAVITY
DROP LATCH

LATCH-CATCH
(LOCKABLE)

OPTIONAL CAST FINIAL

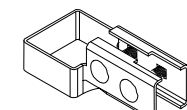


MAPLE LEAF

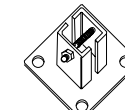


FLEUR DES LIS (FF)

BRACKET



MULTI-FUNCTIONAL
BRACKET (2-BOLT)



WOOD/MASONRY BRACKET

OPTIONAL POST CAPS



PYRAMID

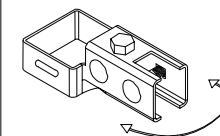


BALL

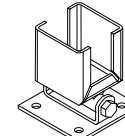


SPIRAL

SWIVEL BRACKET



MULTI-FUNCTIONAL
SWIVEL BRACKET



WOOD/MASONRY SWIVEL
BRACKET

MATERIAL SPECIFICATIONS:

ALU-TUFF™
BY MEDALLION FENCE

PROTECTED BY



SPECIFICATIONS

TUBE COMPOSITION - POSTS , RAILS & PICKETS

- HIGH-STRENGTH EXTRUDED ALUMINUM ALLOY (6061-T4 & 6061-T6 TEMPERS)
- ULTIMATE TENSILE STRENGTH: ≈ 290 MPA (T4), ≈ 339 MPA (T6)
- YIELD STRENGTH: ≈ 210 MPA (T4), ≈ 317 MPA (T6)
- ELONGATION: ≈ 8%-16% (T6), UP TO ~16%+ (T4) DEPENDING ON THICKNESS

MATERIAL DIMENSIONS

| | |
|---|--|
| PICKET | 1" x 1" (25mm x 25mm) .065 Wall |
| RAILS | 1-1/2" x 1-1/2" (38mm x 38mm) .080 Wall |
| POSTS REGULAR or BASE-PLATED | 2-1/2" x 2-1/2" (64mm x 64mm) .125 Wall |
| OPTIONAL POST REGULAR or BASE-PLATED | 3" x 3" (76mm x 76mm) .188 Wall requires cast aluminum mounting bracket |
| UPRIGHTS | 1-1/2" x 1-1/2" (38mm x 38mm) .125 Wall |

| | |
|-------------------|---------------------------------------|
| WELDS | Aluminum Mig Weld |
| FITTINGS | 12 Gauge Stamp Forged Finish as below |
| FITTING FASTENERS | JS1000 Plated Finish as below |
| OPTIONAL FASTENER | Tamper Proof Nuts |

FINISH

| | |
|---------------------|-------------------------------------|
| GRADE | Super Durable Polyester Powder Coat |
| OPTIONAL PRIMER | Zinc Rich Epoxy Powder Coat |
| OPTIONAL PRIMER (2) | E-Coat |
| STANDARD COLOUR | SEMI-GLOSS - BLACK |
| OTHER COLOURS | Green, Brown, White, Antique Silver |
| CUSTOM COLOURS | Per Specifications |

| | | | | | | | |
|-------------------------|---|----------------|----------------|----------------|----------------|----------------|-----------------|
| STANDARD HEIGHTS | 4'-3" [1295MM] | 5'-3" [1600MM] | 6'-3" [1905MM] | 7'-3" [2210MM] | 8'-3" [2514MM] | 9'-3" [2819MM] | 10'-3" [3124MM] |
| | Custom heights are available (upon request) | | | | | | |

| | |
|----------------|-----------------------------------|
| STANDARD GATES | Passage, Double Entry, Cantilever |
|----------------|-----------------------------------|

STANDARD POST SETTING & PANEL WIDTH

| | | |
|--------------------------|--------------------|-------------------------------|
| FOR FENCE HEIGHTS | PANEL WIDTH | POST SPACING [OPENING] |
| Up to 6' [1829mm] | 88 3/4" [2255MM] | 91 1/2" [2324MM] |
| Over 6' [1829mm] | 88 3/4" [2255MM] | 91 1/2" [2324MM] |