



Medallion Fence

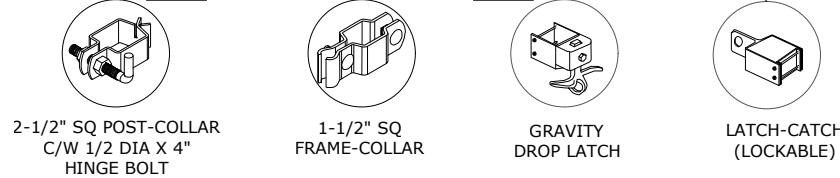
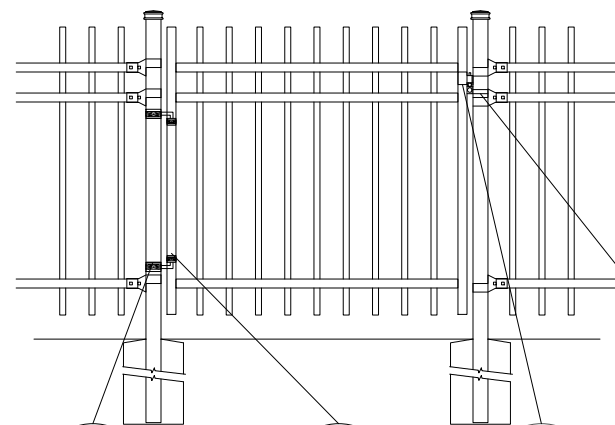
10651 KEELE STREET
 MAPLE, ONTARIO L6A 3Y9
 (T) 905-832-2922 || 1-800-794-1564 || (F) 905-832-1564
 info@medallionfence.com || www.medallionfence.com

Medallion Fence

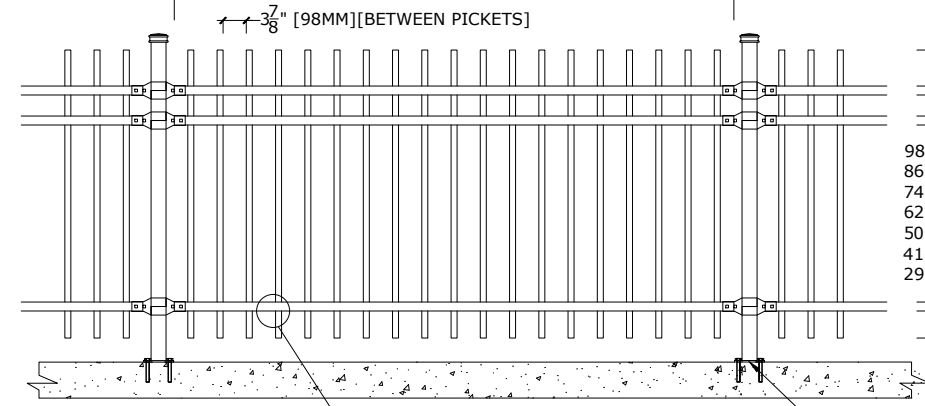
STYLE:
CAVALIER-DR

SERIES:
OXFORD™

SINGLE-GATES OPENINGS
 AS REQUIRED 38"-72"
 STANDARD.[52"]



STANDARD POST SETTING - 96" [2438MM]
 STANDARD PANEL WIDTH - 93 1/4" [2369MM]

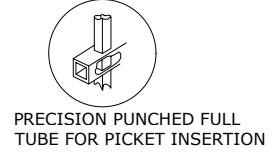


8" [203MM] FOR 6'-10' H
 6" [152MM] FOR 4'-5' H

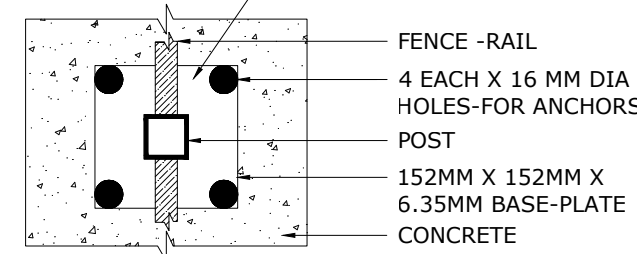
3 1/2" [89MM]

98" (2489MM) FOR 10' H
 86" (2184MM) FOR 9' H
 74" (1880MM) FOR 8' H
 62" (1575MM) FOR 7' H
 50" (1270MM) FOR 6' H
 41-1/2" (1054MM) FOR 5' H
 29 1/2" [749MM] FOR 4' H

6" [152MM] FOR 6'-10' H
 4 1/2" [114MM] FOR 4'-5' H

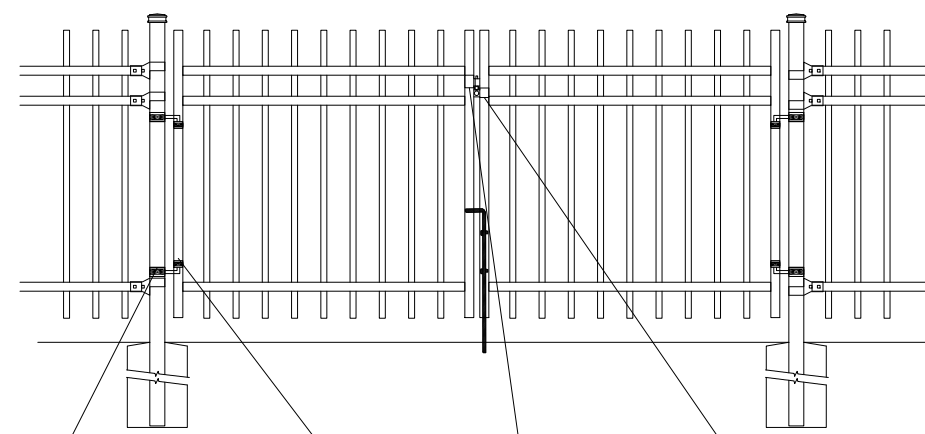


BASE-PLATE (OPTIONAL)



FENCE -RAIL
 4 EACH X 16 MM DIA HOLES-FOR ANCHORS
 POST
 152MM X 152MM X 6.35MM BASE-PLATE
 CONCRETE

DOUBLE-GATES OPENINGS AS
 REQUIRED 74"-240" STANDARD.[104"]



8" [203MM] FOR 6'-10' H
 6" [152MM] FOR 4'-5' H

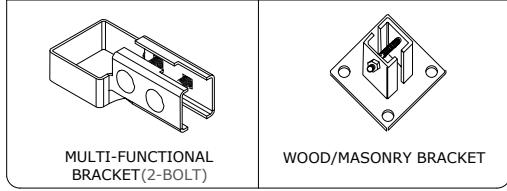
3 1/2" [89MM]

98" (2489MM) FOR 10' H
 86" (2184MM) FOR 9' H
 74" (1880MM) FOR 8' H
 62" (1575MM) FOR 7' H
 50" (1270MM) FOR 6' H
 41-1/2" (1054MM) FOR 5' H
 29 1/2" [749MM] FOR 4' H

6" [152MM] FOR 6'-10' H
 4 1/2" [114MM] FOR 4'-5' H

NOTE: Pickets can be extended to accommodate for changes in grade

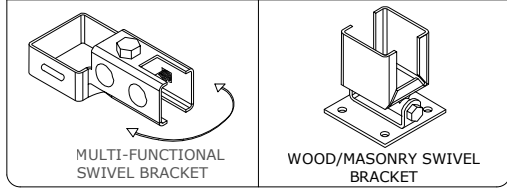
BRACKET



MULTI-FUNCTIONAL BRACKET (2-BOLT)

WOOD/MASONRY BRACKET

SWIVEL BRACKET



MULTI-FUNCTIONAL SWIVEL BRACKET

WOOD/MASONRY SWIVEL BRACKET

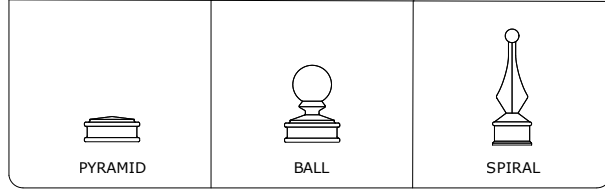
MATERIAL SPECIFICATIONS:

ARMOUR-SHIELD™
 BY MEDALLION FENCE

PROTECTED BY



OPTIONAL POST CAPS



PYRAMID

BALL

SPIRAL

SPECIFICATIONS

TUBE COMPOSITION - POSTS , RAILS & PICKETS

- MINIMUM YIELD STRENGTH: 45 KSI (310 MPA)
- MINIMUM TENSILE STRENGTH: 55 KSI (380 MPA)
- ASTM A787 (TUBE)
- TUBE MANUFACTURED FROM PRE-COATED ALUMINUM-ZINC COATED STEEL WITH COATING DESIGNATION AZ50 CONFORMING TO ASTM A792/A792M

MATERIAL DIMENSIONS

PICKET	1" x 1" (25mm x 25mm) 16 GA
RAILS	1-1/2" x 1-1/2" (38mm x 38mm) 14 GA
POSTS REGULAR or BASE-PLATED	2-1/2" x 2-1/2" (64mm x 64mm) 14 GA
OPTIONAL POST REGULAR or BASE-PLATED	HSS 3" (76mm) Sq./4" (102mm) Sq./6" (152mm) Sq.
UPRIGHTS	1-1/2" x 1-1/2" (38mm x 38mm) 14 GA

WELDS	Stainless Steel Mig Weld
FITTINGS	12 Gauge Stamp Forged Finish as below
FITTING FASTENERS	JS1000 Plated Finish as below
OPTIONAL FASTENER	Tamper Proof Nuts

FINISH

GRADE	Super Durable Polyester Powder Coat
OPTIONAL PRIMER	Zinc Rich Epoxy Powder Coat
OPTIONAL PRIMER (2)	E-Coat
STANDARD COLOUR	SEMI-GLOSS - BLACK
OTHER COLOURS	Green, Brown, White, Antique Silver
CUSTOM COLOURS	Per Specifications

STANDARD HEIGHTS	4'	5'	6'	7'	8'	9'	10'
	1219MM	1524MM	1892MM	2134MM	2438MM	2743MM	3048MM
Custom heights are available (upon request)							

STANDARD GATES	Passage, Double Entry, Cantilever
----------------	-----------------------------------

STANDARD POST SETTING & PANEL WIDTH

FOR FENCE HEIGHTS	PANEL WIDTH	POST SPACING [OPENING]
Up to 6' [1829mm]	93 1/4" [2369MM]	96" [2438 MM]
Over 6' [1829mm]	93 1/4" [2369MM]	96" [2438 MM]