



# Medallion Fence

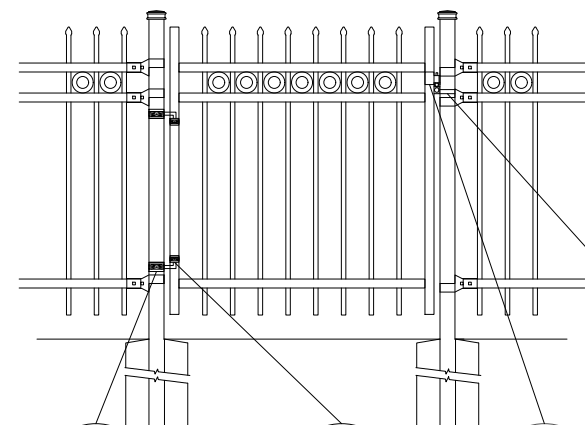
10651 KEELE STREET  
 MAPLE, ONTARIO L6A 3Y9  
 (T) 905-832-2922 || 1-800-794-1564 || (F) 905-832-1564  
 info@medallionfence.com || www.medallionfence.com

Medallion Fence

**STYLE:**  
**ARISTOCRAT-DR-REP-AL**

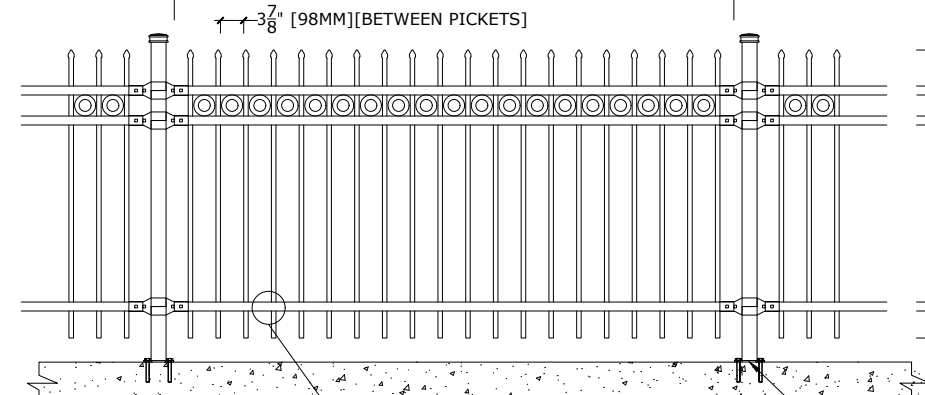
**SERIES:**  
**OXFORD 75™**

SINGLE-GATES OPENINGS  
 AS REQUIRED 38"-72"  
 STANDARD [46"]



- 2-1/2" SQ POST-COLLAR  
C/W 1/2 DIA X 4"  
HINGE BOLT
- 1-1/2" SQ  
FRAME-COLLAR
- GRAVITY  
DROP LATCH
- LATCH-CATCH  
(LOCKABLE)

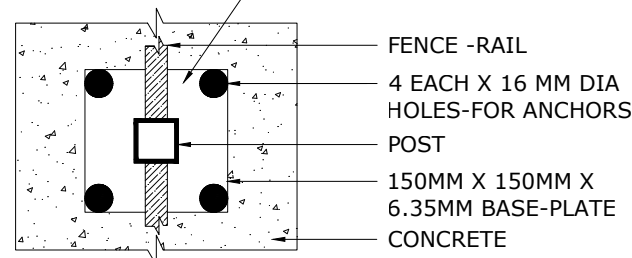
STANDARD POST SETTING - 96" [2438MM]  
 STANDARD PANEL WIDTH - 93 1/4" [2369MM]



- PRECISION PUNCHED FULL  
TUBE FOR PICKET INSERTION

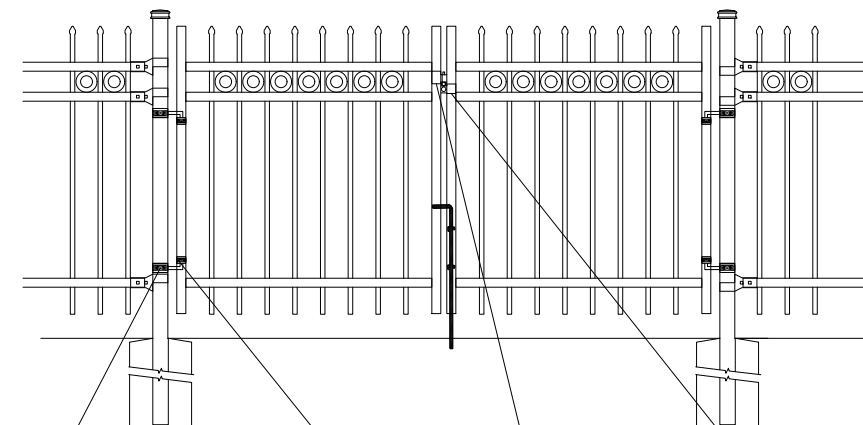
- 8" [203MM] FOR 6'-8" H  
6" [152MM] FOR 4'-5" H
- 3 1/2" [89MM]
- 74" [1880mm] for 8' H  
62" [1575mm] for 7' H  
50" [1270mm] for 6' H  
41-1/2" [1054mm] for 5' H  
29 1/2" [749MM] FOR 4' H
- 6" [152MM] FOR 6'-8" H  
4 1/2" [114MM] FOR 4'-5" H

BASE-PLATE (OPTIONAL)



- FENCE -RAIL
- 4 EACH X 16 MM DIA  
HOLES-FOR ANCHORS
- POST
- 150MM X 150MM X  
6.35MM BASE-PLATE
- CONCRETE

DOUBLE-GATES OPENINGS AS  
 REQUIRED 74"-240" STANDARD [92"]

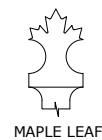


- 2-1/2" SQ POST-COLLAR  
C/W 1/2 DIA X 4"  
HINGE BOLT
- 1-1/2" SQ  
FRAME-COLLAR
- GRAVITY  
DROP LATCH
- LATCH-CATCH  
(LOCKABLE)

- 8" [203MM] FOR 6'-8" H  
6" [152MM] FOR 4'-5" H
- 3 1/2" [89MM]
- 74" [1880mm] for 8' H  
62" [1575mm] for 7' H  
50" [1270mm] for 6' H  
41-1/2" [1054mm] for 5' H  
29 1/2" [749MM] FOR 4' H
- 6" [152MM] FOR 6'-8" H  
4 1/2" [114MM] FOR 4'-5" H

NOTE: Pickets can be  
 extended to accommodate  
 for changes in grade

### OPTIONAL PICKET DESIGNS

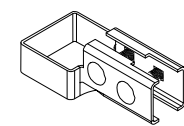


MAPLE LEAF

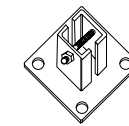


ARROW

### BRACKET



MULTI-FUNCTIONAL  
BRACKET (2-BOLT)



WOOD/MASONRY BRACKET

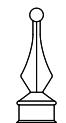
### OPTIONAL POST CAPS



PYRAMID

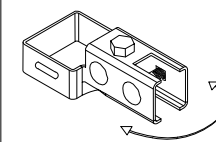


BALL

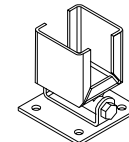


SPIRAL

### SWIVEL BRACKET



MULTI-FUNCTIONAL  
SWIVEL BRACKET



WOOD/MASONRY SWIVEL  
BRACKET

### MATERIAL SPECIFICATIONS:

ALU-TUFF™  
 BY MEDALLION FENCE

PROTECTED BY



### SPECIFICATIONS

#### TUBE COMPOSITION - POSTS , RAILS & PICKETS

- HIGH-STRENGTH EXTRUDED ALUMINUM ALLOY (6061-T4 & 6061-T6 TEMPER)
- ULTIMATE TENSILE STRENGTH: ≈ 290 MPA (T4), ≈ 339 MPA (T6)
- YIELD STRENGTH: ≈ 210 MPA (T4), ≈ 317 MPA (T6)
- ELONGATION: ≈ 8%-16% (T6), UP TO ~16%+ (T4) DEPENDING ON THICKNESS

### MATERIAL DIMENSIONS

PICKET	3/4" x 3/4" (19mm x 19mm) .065 Wall
RAILS	1-1/2" x 1-1/2" (38mm x 38mm) .080 Wall
POSTS REGULAR or BASE-PLATED	2-1/2" x 2-1/2" (64mm x 64mm) .100 Wall
OPTIONAL POST REGULAR or BASE-PLATED	3" x 3" (76mm x 76mm) .188 Wall requires cast aluminum mounting bracket
UPRIGHTS	1-1/2" x 1-1/2" (38mm x 38mm) .100 Wall

<b>WELDS</b>	Aluminum Mig Weld
<b>FITTINGS</b>	12 Gauge Stamp Forged Finish as below
FITTING FASTENERS	JS1000 Plated Finish as below
OPTIONAL FASTENER	Tamper Proof Nuts

### FINISH

<b>GRADE</b>	Super Durable Polyester Powder Coat
OPTIONAL PRIMER	Zinc Rich Epoxy Powder Coat
OPTIONAL PRIMER (2)	E-Coat
STANDARD COLOUR	SEMI-GLOSS - BLACK
OTHER COLOURS	Green, Brown, White, Antique Silver
CUSTOM COLOURS	Per Specifications

<b>STANDARD HEIGHTS</b>	4' 1219mm	5' 1524mm	6' 1829mm	7' 2134mm	8' 2438mm
	Custom heights are available (upon request)				

STANDARD GATES	Passage, Double Entry, Cantilever
----------------	-----------------------------------

### STANDARD POST SETTING & PANEL WIDTH

<b>FOR FENCE HEIGHTS</b>	<b>PANEL WIDTH</b>	<b>POST SPACING [OPENING]</b>
Up to 6' [1829mm]	93 1/4" [2369MM]	96" [2438MM]
Over 6' [1829mm]	93 1/4" [2369MM]	96" [2438MM]