



Medallion Fence

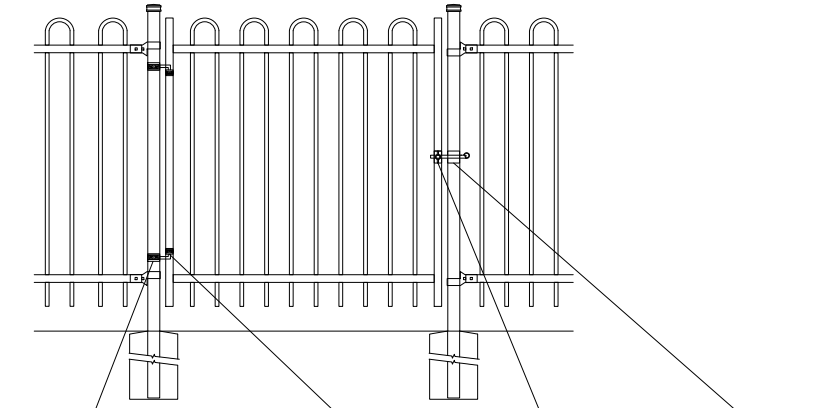
10651 KEELE STREET
 MAPLE, ONTARIO L6A 3Y9
 (T) 905-832-2922 || 1-800-794-1564 || (F) 905-832-1564
 info@medallionfence.com || www.medallionfence.com

Medallion Fence

STYLE:
STERLING

SERIES:
FAIRMONT™

SINGLE-GATES OPENINGS
 AS REQUIRED 36", 48"
 OR 60" STANDARD



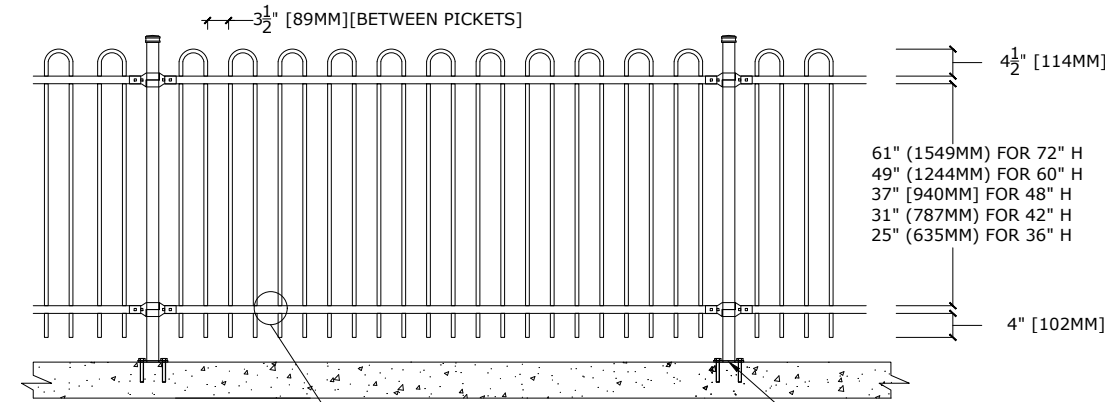
2" SQ POST-COLLAR
 C/W 1/2 DIA X 4"
 HINGE BOLT

1-1/4" SQ
 FRAME-COLLAR

1-1/4" SQ
 FINGER-LATCH

2" SQ.
 GRAVITY-CATCH
 (LOCKABLE)

STANDARD POST SETTING - 94" [2388MM]
 STANDARD PANEL WIDTH - 92" [2337MM]



3 1/2" [89MM] [BETWEEN PICKETS]

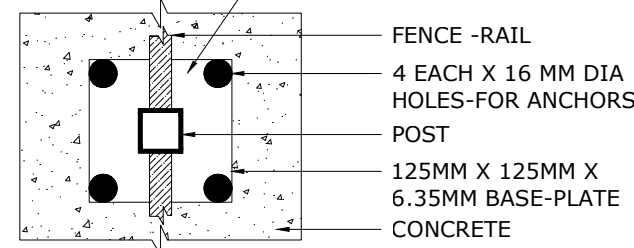
4 1/2" [114MM]

61" (1549MM) FOR 72" H
 49" (1244MM) FOR 60" H
 37" [940MM] FOR 48" H
 31" (787MM) FOR 42" H
 25" (635MM) FOR 36" H

4" [102MM]

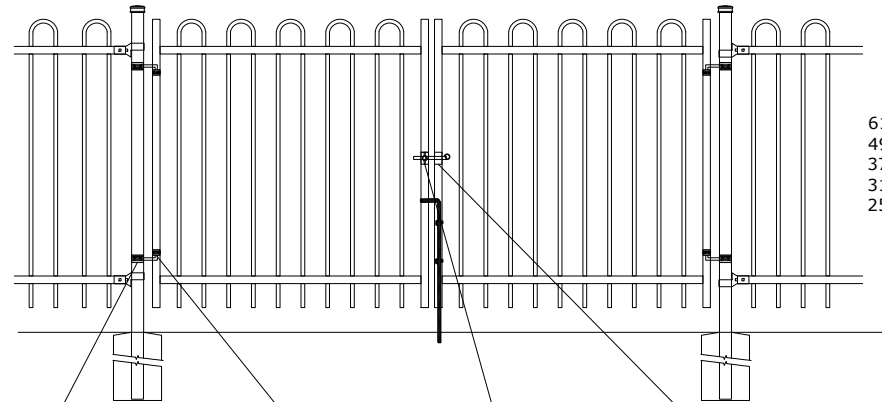
PRECISION PUNCHED FULL
 TUBE FOR PICKET INSERTION

BASE-PLATE (OPTIONAL)



FENCE -RAIL
 4 EACH X 16 MM DIA
 HOLES-FOR ANCHORS
 POST
 125MM X 125MM X
 6.35MM BASE-PLATE
 CONCRETE

DOUBLE-GATES OPENINGS AS
 REQUIRED 72", 96" OR 120"
 STANDARD



4 1/2" [114MM]

61" (1549MM) FOR 72" H
 49" (1244MM) FOR 60" H
 37" [940MM] FOR 48" H
 31" (787MM) FOR 42" H
 25" (635MM) FOR 36" H

4" [102MM]

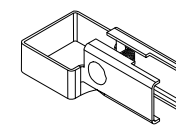
2" SQ POST-COLLAR
 C/W 1/2 DIA X 4"
 HINGE BOLT

1-1/4" SQ
 FRAME-COLLAR

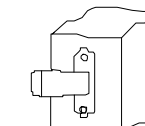
1-1/4" SQ
 FINGER-LATCH

2" SQ.
 GRAVITY-CATCH
 (LOCKABLE)

BRACKET



MULTI-FUNCTIONAL
 BRACKET

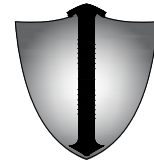


WOOD/MASONRY BRACKET

MATERIAL SPECIFICATIONS:

ARMOUR-SHIELD™
 BY MEDALLION FENCE

PROTECTED BY



ARMOUR-SHIELD™

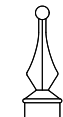
OPTIONAL POST CAPS



PYRAMID

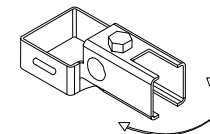


BALL

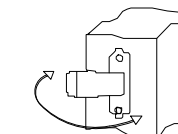


SPIRAL

SWIVEL BRACKET



SWIVEL BRACKET



WOOD/MASONRY SWIVEL
 BRACKET

SPECIFICATIONS

TUBE COMPOSITION - POSTS , RAILS & PICKETS

- MINIMUM YIELD STRENGTH: 45 KSI (310 MPA)
- MINIMUM TENSILE STRENGTH: 55 KSI (380 MPA)
- ASTM A787 (TUBE)
- TUBE MANUFACTURED FROM PRE-COATED ALUMINUM-ZINC COATED STEEL WITH COATING DESIGNATION AZ50 CONFORMING TO ASTM A792/A792M

MATERIAL DIMENSIONS

PICKET	5/8" x 5/8" (16mm x 16mm) 18 GA
RAILS	1-1/4" x 1-1/4" (32mm x 32mm) 16 GA
POSTS REGULAR or BASE-PLATED	2" x 2" (51mm x 51mm) 16 GA or 14 GA
OPTIONAL POST REGULAR or BASE-PLATED	2-1/2" x 2-1/2" (64mmx64mm) 14 GA
UPRIGHTS	1-1/4" x 1-1/4" (32mm x 32mm) 16 GA or 14 GA

WELDS	Stainless Steel Mig Weld
FITTINGS	14 Gauge Stamp Forged Finish as below
FITTING FASTENERS	JS1000 Plated Finish as below
OPTIONAL FASTENER	Tamper Proof Nuts

FINISH

GRADE	Super Durable Polyester Powder Coat
OPTIONAL PRIMER	Zinc Rich Epoxy Powder Coat
OPTIONAL PRIMER (2)	E-Coat
STANDARD COLOUR	SEMI-GLOSS - BLACK
OTHER COLOURS	Green, Brown, White, Antique Silver
CUSTOM COLOURS	Per Specifications

STANDARD HEIGHTS	NA	NA	48" 1219mm	60" 1524mm	72" 1892mm
	Custom heights are available (upon request)				

STANDARD GATES	Passage, Double Entry, Cantilever
----------------	-----------------------------------

STANDARD POST SETTING & PANEL WIDTH

FOR FENCE HEIGHTS	PANEL WIDTH	POST SPACING [OPENING]
Up to 6' [1829mm]	92" [2337MM]	94" [2388 MM]
Over 6' [1829mm]	NA	