



# Medallion Fence

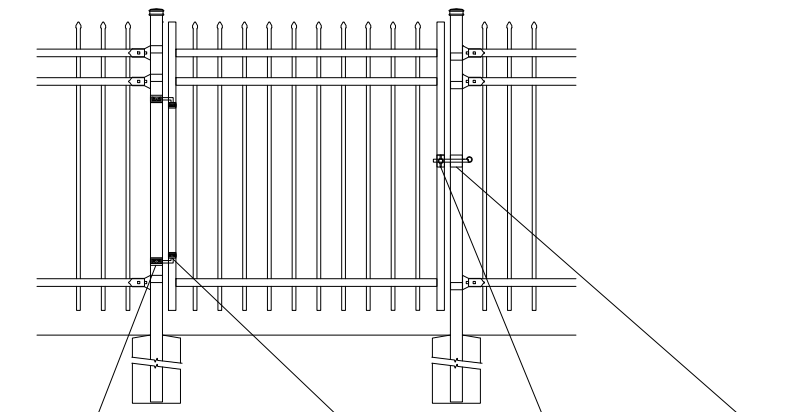
10651 KEELE STREET  
 MAPLE, ONTARIO L6A 3Y9  
 (T) 905-832-2922 || 1-800-794-1564 || (F) 905-832-1564  
 info@medallionfence.com || www.medallionfence.com

Medallion Fence

**STYLE:**  
**ARISTOCRAT-DR**

**SERIES:**  
**FAIRMONT™**

SINGLE-GATES OPENINGS  
 AS REQUIRED 36", 48"  
 OR 60" STANDARD



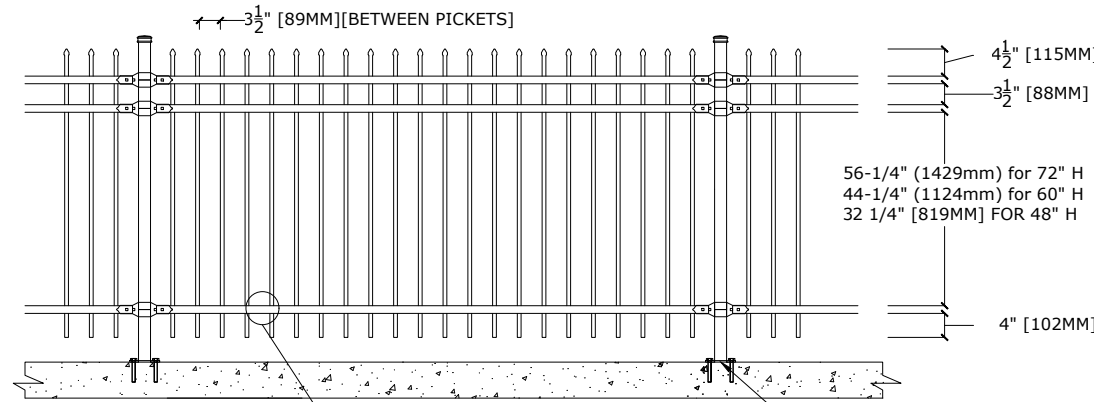
2" SQ POST-COLLAR  
 C/W 1/2 DIA X 4"  
 HINGE BOLT

1-1/4" SQ  
 FRAME-COLLAR

1-1/4" SQ  
 FINGER-LATCH

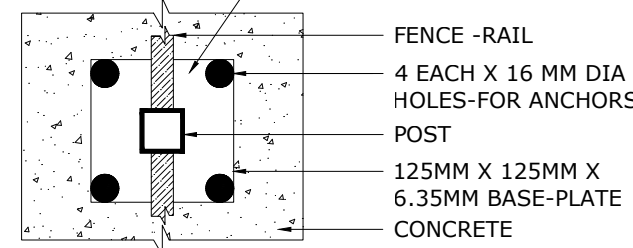
2" SQ.  
 GRAVITY-CATCH  
 (LOCKABLE)

STANDARD POST SETTING - 94" [2388MM]  
 STANDARD PANEL WIDTH - 92" [2337MM]



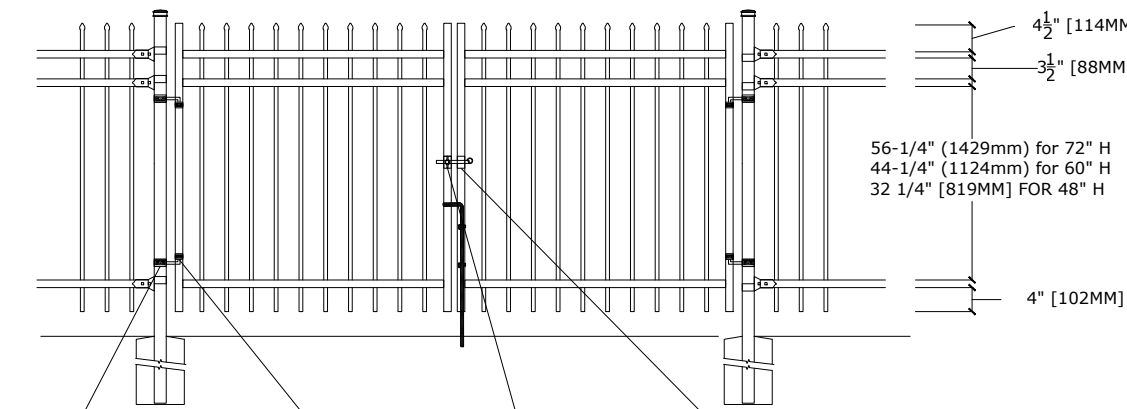
PRECISION PUNCHED FULL  
 TUBE FOR PICKET INSERTION

BASE-PLATE (OPTIONAL)



FENCE -RAIL  
 4 EACH X 16 MM DIA  
 HOLES-FOR ANCHORS  
 POST  
 125MM X 125MM X  
 6.35MM BASE-PLATE  
 CONCRETE

DOUBLE-GATES OPENINGS AS  
 REQUIRED 72", 96" OR 120"  
 STANDARD



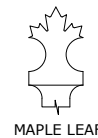
2" SQ POST-COLLAR  
 C/W 1/2 DIA X 4"  
 HINGE BOLT

1-1/4" SQ  
 FRAME-COLLAR

1-1/4" SQ  
 FINGER-LATCH

2" SQ.  
 GRAVITY-CATCH  
 (LOCKABLE)

### OPTIONAL PICKET DESIGNS

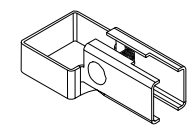


MAPLE LEAF

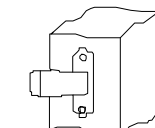


ARROW

### BRACKET



MULTI-FUNCTIONAL  
 BRACKET



WOOD/MASONRY BRACKET

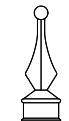
### OPTIONAL POST CAPS



PYRAMID

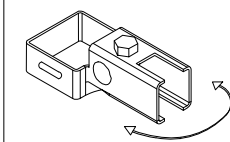


BALL

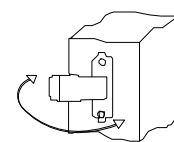


SPIRAL

### SWIVEL BRACKET



SWIVEL BRACKET

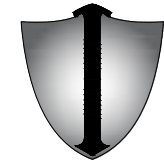


WOOD/MASONRY SWIVEL  
 BRACKET

### MATERIAL SPECIFICATIONS:

ARMOUR-SHIELD™  
 BY MEDALLION FENCE

PROTECTED BY



ARMOUR-SHIELD™

### SPECIFICATIONS

#### TUBE COMPOSITION - POSTS , RAILS & PICKETS

- MINIMUM YIELD STRENGTH: 45 KSI (310 MPA)
- MINIMUM TENSILE STRENGTH: 55 KSI (380 MPA)
- ASTM A787 (TUBE)
- TUBE MANUFACTURED FROM PRE-COATED ALUMINUM-ZINC COATED STEEL WITH COATING DESIGNATION AZ50 CONFORMING TO ASTM A792/A792M

### MATERIAL DIMENSIONS

|   |  |
|---|--|
| PICKET                                  | 5/8" x 5/8" (16mm x 16mm) 18 GA              |
| RAILS                                   | 1-1/4" x 1-1/4" (32mm x 32mm) 16 GA          |
| POSTS<br>REGULAR or BASE-PLATED         | 2" x 2" (51mm x 51mm) 16 GA or 14 GA         |
| OPTIONAL POST<br>REGULAR or BASE-PLATED | 2-1/2" x 2-1/2" (64mmx64mm) 14 GA            |
| UPRIGHTS                                | 1-1/4" x 1-1/4" (32mm x 32mm) 16 GA or 14 GA |

|                   |                                       |
|-------------------|---------------------------------------|
| <b>WELDS</b>      | Stainless Steel Mig Weld              |
| <b>FITTINGS</b>   | 14 Gauge Stamp Forged Finish as below |
| FITTING FASTENERS | JS1000 Plated Finish as below         |
| OPTIONAL FASTENER | Tamper Proof Nuts                     |

### FINISH

|                     |                                     |
|---------------------|-------------------------------------|
| <b>GRADE</b>        | Super Durable Polyester Powder Coat |
| OPTIONAL PRIMER     | Zinc Rich Epoxy Powder Coat         |
| OPTIONAL PRIMER (2) | E-Coat                              |
| STANDARD COLOUR     | SEMI-GLOSS - BLACK                  |
| OTHER COLOURS       | Green, Brown, White, Antique Silver |
| CUSTOM COLOURS      | Per Specifications                  |

|                         |   |    |               |               |               |
|-------------------------|---|----|---------------|---------------|---------------|
| <b>STANDARD HEIGHTS</b> | NA  | NA | 48"<br>1219mm | 60"<br>1524mm | 72"<br>1892mm |
|                         | Custom heights are available (upon request) |    |               |               |               |

|                |                                   |
|----------------|-----------------------------------|
| STANDARD GATES | Passage, Double Entry, Cantilever |
|----------------|-----------------------------------|

### STANDARD POST SETTING & PANEL WIDTH

|                          |                    |                               |
|--------------------------|--------------------|-------------------------------|
| <b>FOR FENCE HEIGHTS</b> | <b>PANEL WIDTH</b> | <b>POST SPACING [OPENING]</b> |
| Up to 6' [1829mm]        | 92" [2337MM]       | 94" [2388 MM]                 |
| Over 6' [1829mm]         | NA                 |                               |