



# Medallion Fence

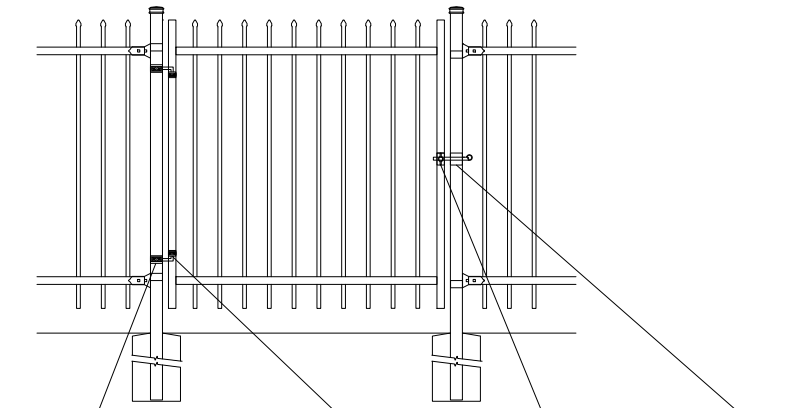
10651 KEELE STREET  
 MAPLE, ONTARIO L6A 3Y9  
 (T) 905-832-2922 || 1-800-794-1564 || (F) 905-832-1564  
 info@medallionfence.com || www.medallionfence.com

Medallion Fence

**STYLE:**  
**ARISTOCRAT-AL**

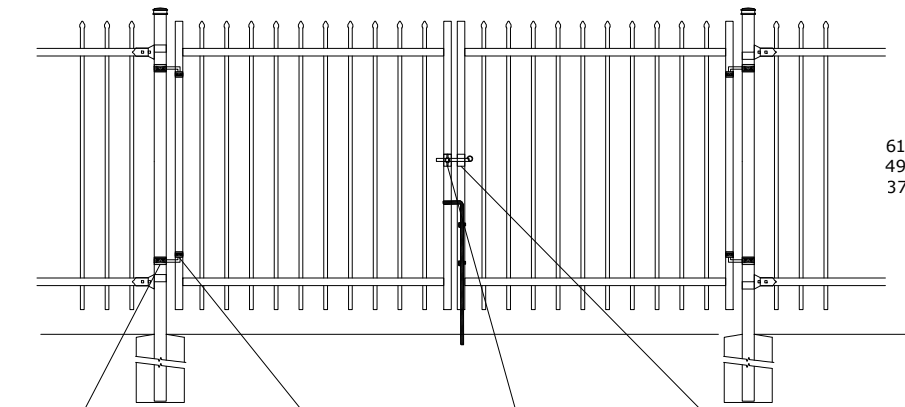
**SERIES:**  
**FAIRMONT™**

SINGLE-GATES OPENINGS  
 AS REQUIRED 36", 48"  
 OR 60" STANDARD



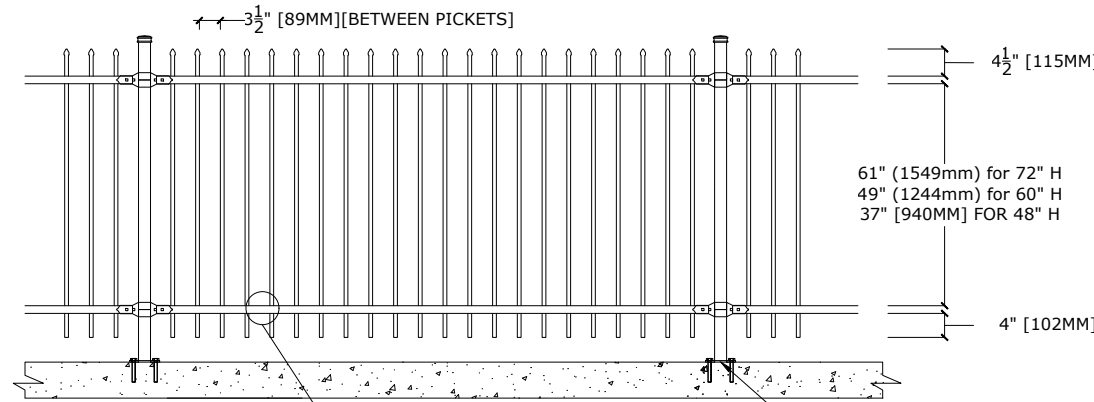
- 2" SQ POST-COLLAR  
C/W 1/2 DIA X 4"  
HINGE BOLT
- 1-1/4"SQ  
FRAME-COLLAR
- 1-1/4" SQ  
FINGER-LATCH
- 2" SQ.  
GRAVITY-CATCH  
(LOCKABLE)

DOUBLE-GATES OPENINGS AS  
 REQUIRED 72", 96" OR 120"  
 STANDARD

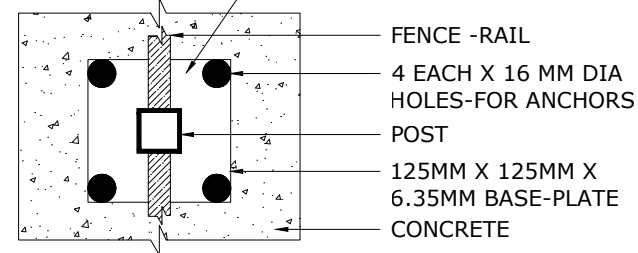


- 2" SQ POST-COLLAR  
C/W 1/2 DIA X 4"  
HINGE BOLT
- 1-1/4"SQ  
FRAME-COLLAR
- 1-1/4" SQ  
FINGER-LATCH
- 2" SQ.  
GRAVITY-CATCH  
(LOCKABLE)

STANDARD POST SETTING - 94" [2388MM]  
 STANDARD PANEL WIDTH - 92" [2337MM]



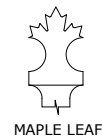
- PRECISION PUNCHED FULL  
TUBE FOR PICKET INSERTION



BASE-PLATE (OPTIONAL)

- FENCE -RAIL
- 4 EACH X 16 MM DIA  
HOLES-FOR ANCHORS
- POST
- 125MM X 125MM X  
6.35MM BASE-PLATE
- CONCRETE

### OPTIONAL PICKET DESIGNS

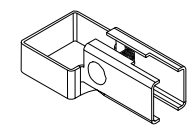


MAPLE LEAF

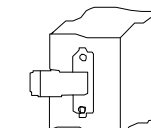


ARROW

### BRACKET



MULTI-FUNCTIONAL  
BRACKET



WOOD/MASONRY BRACKET

### OPTIONAL POST CAPS



PYRAMID

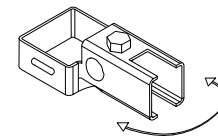


BALL

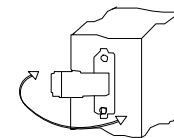


SPIRAL

### SWIVEL BRACKET



SWIVEL BRACKET



WOOD/MASONRY SWIVEL  
BRACKET

### MATERIAL SPECIFICATIONS:

ALU-TUFF™  
 BY MEDALLION FENCE

PROTECTED BY



### SPECIFICATIONS

#### TUBE COMPOSITION - POSTS , RAILS & PICKETS

- HIGH-STRENGTH EXTRUDED ALUMINUM ALLOY (6061-T4 & 6061-T6 TEMPER)
- ULTIMATE TENSILE STRENGTH: ≈ 290 MPA (T4), ≈ 339 MPA (T6)
- YIELD STRENGTH: ≈ 210 MPA (T4), ≈ 317 MPA (T6)
- ELONGATION: ≈ 8%-16% (T6), UP TO ~16%+ (T4) DEPENDING ON THICKNESS

### MATERIAL DIMENSIONS

PICKET	5/8" x 5/8" (16mm x 16mm) .065 Wall
RAILS	1-1/4" x 1-1/4" (32mm x 32mm) .080 Wall
POSTS REGULAR or BASE-PLATED	2" x 2" (51mm x 51mm) .125 Wall
OPTIONAL POST REGULAR or BASE-PLATED	2-1/2" x 2-1/2" (64mmx64mm) .125 Wall
UPRIGHTS	1-1/4" x 1-1/4" (32mm x 32mm) .125 Wall

<b>WELDS</b>	Aluminum Mig Weld
<b>FITTINGS</b>	14 Gauge Stamp Forged Finish as below
FITTING FASTENERS	JS1000 Plated Finish as below
OPTIONAL FASTENER	Tamper Proof Nuts

### FINISH

<b>GRADE</b>	Super Durable Polyester Powder Coat
OPTIONAL PRIMER	Zinc Rich Epoxy Powder Coat
OPTIONAL PRIMER (2)	E-Coat
STANDARD COLOUR	SEMI-GLOSS - BLACK
OTHER COLOURS	Green, Brown, White, Antique Silver
CUSTOM COLOURS	Per Specifications

<b>STANDARD HEIGHTS</b>	NA	NA	48" 1219mm	60" 1524mm	72" 1892mm
	Custom heights are available (upon request)				

STANDARD GATES	Passage, Double Entry, Cantilever
----------------	-----------------------------------

### STANDARD POST SETTING & PANEL WIDTH

<b>FOR FENCE HEIGHTS</b>	<b>PANEL WIDTH</b>	<b>POST SPACING [OPENING]</b>
Up to 6' [1829mm]	92" [2337MM]	94" [2388 MM]
Over 6' [1829mm]	NA	